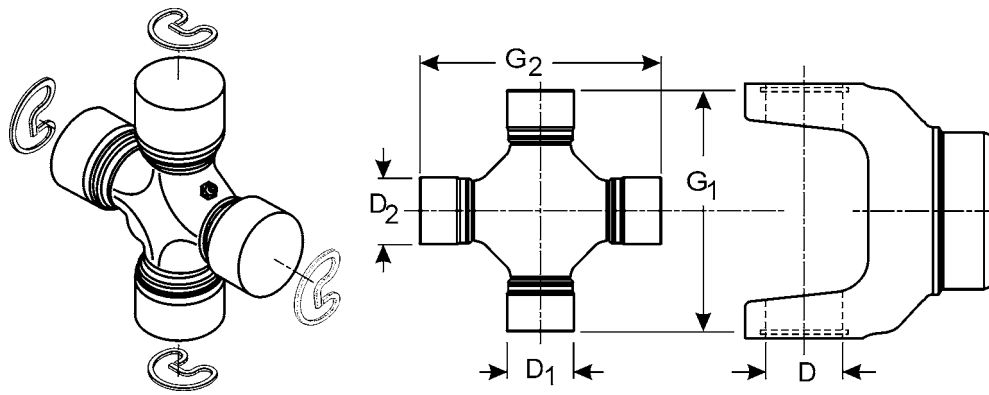


MSC

G1 Over Caps	D1 Bearing cap Diameter	G2 Over Caps	D2 Bearing cap Diameter	OE Mfg.	OE Series	Converts From this Series	To this Series Part	Greasable (Y=yes N=no)	Spicer Part Number
1.732	.811	1.732	.811	SPICER ITALCARDANO	44-B			N	050576000
1.850	.732	1.850	.732	SPICER ITALCARDANO	47-B			Y	050560000
2.046	.750	2.046	.750	SPICER ITALCARDANO	U-30			Y	050910000
2.165	.866	2.615	.866	WALTERSCHEID	2100				040116 [▲]
2.409	.938	2.409	.938	SPICER	1100-SG			Y	5-102X [•]
2.411	.938	2.411	.938	SPICER ITALCARDANO	61-B OR 1100			Y	050701000
2.411	.938	2.411	.938	SPICER	1100			N	5-101X
2.411	.938	2.411	.938	SPICER	1100			Y	5-111X
									5-111X was replaced by 5-101X
2.438	1.062	2.438	1.062	SPICER	1210			Y	5-443X
									Lube fitting in brg. cap
2.438	1.062	2.438	1.062	SPICER	1210			N	5-526X
2.438	1.062	2.438	1.062	SPICER	1210			N	5-547X
									Has metal back seals
2.438	1.062	2.438	1.062	SPICER	1210			Y	5-554X
									Grease zerk in brg. cup, Has metal back seals
2.438	1.062	2.438	1.062	SPICER	1210			N	5-736X
2.498	.984	2.498	.984	DODGE COLT				Y	5-1503X
2.679	1.125	2.679	1.125	ROCKWELL	L14N	1240	L14N	Y	5-129X
2.931	.882	2.931	.882	ROCKWELL	1FR-AG			Y	5-264X
									No Brgs in brg.cap
2.933	1.063	2.933	1.063	WALTERSCHEID	2300				044444 [•]
2.938	1.063	2.938	1.063	SPICER	1310			Y	5-4X [•]
2.939	1.062	2.939	1.062	SPICER ITALCARDANO	75-B			Y	050585000
2.993	1.260	2.993	1.260	WALTERSCHEID	2400				312410 [•]
3.207	1.250	3.207	1.250	ROCKWELL	35N	1340	35N	Y	5-243X
3.219	1.062	3.219	1.062	SPICER	1310			Y	5-255X
									5-255X will be replaced by 5-810X when supply is exhausted
3.219	1.062	3.219	1.062	SPICER	1310			Y	5-810X
									Spicer Life Series
3.219	1.062	3.219	1.062	SPICER	1310/SPL22			N	SPL22-1X
3.219	1.062	3.219	1.062	SPICER	1310/SPL22			N	SPL22-2X
									Coated bearing caps
3.219	1.062	3.219	1.062	SPICER	1310			Y	5-153X

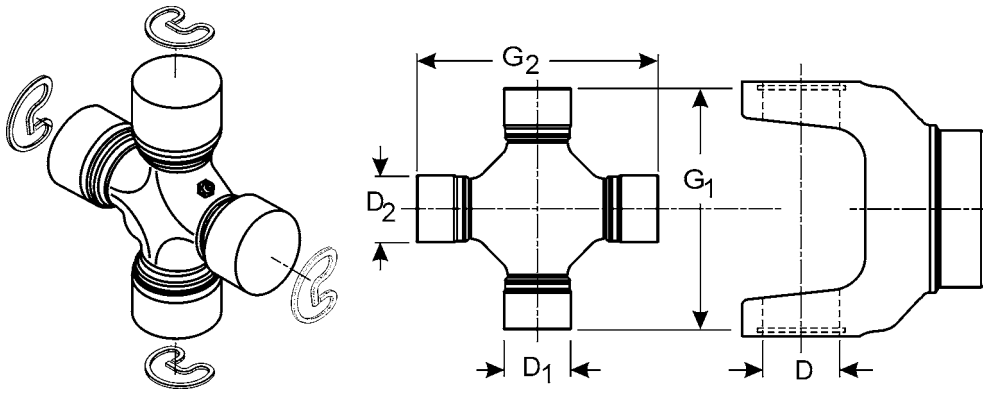
• Part is discontinued ■ Part is available until supply is exhausted ▲ Not sold separately



G1 Over Caps	D1 Bearing cap Diameter	G2 Over Caps	D2 Bearing cap Diameter	OE Mfg.	OE Series	Converts From this Series	To this Series Part	Greasable (Y=yes N=no)	Spicer Part Number
3.219	1.062	3.219	1.062	SPICER	1310			Y	5-278X <i>Flush lube fitting in cross</i>
3.219	1.062	3.219	1.062	SPICER	1310			Y	5-419X <i>Has metal back seals</i>
3.219	1.062	3.219	1.062	SPICER	1310-CV			Y	5-433-1X <i>Lube fitting in bearing cap</i>
3.219	1.062	3.219	1.062	SPICER	1310			Y	5-477X <i>Same as 5-153X except has black seals</i>
3.219	1.062	3.219	1.062	SPICER	1310			Y	5-511X <i>Has long grease zerk</i>
3.219	1.062	3.219	1.062	SPICER	1310			N	5-611-1X <i>Includes various thickness snap rings</i>
3.219	1.062	3.219	1.062	SPICER	1310			N	5-785X <i>Spicer Life Series</i>
3.219	1.062	3.219	1.062	SPICER	1310			N	5-786X• <i>Coated bearing caps; Spicer Life Series</i>
3.219	1.062	3.219	1.125	SPICER	1310SPEC/SPL22	S55	SPL22	N	SPL22-3X
3.219	1.062	3.219	1.125	SPICER	1310SPEC			Y	5-1201X
3.219	1.062	3.219	1.125	SPICER	1310SPEC			Y	5-719X•
3.219	1.062	3.219	1.125	SPICER	1310SPEC			N	5-787X <i>Spicer Life Series</i>
3.219	1.062	3.625	1.062	SPICER		1310	1330	Y	5-134X
3.219	1.062	3.625	1.188	SPICER		1310	1350	Y	5-460X
3.503	1.417	3.503	1.417	WALTERSCHEID	2500				312209•
3.622	1.181	3.622	1.181	WALTERSCHEID	W220				041662•
3.625	1.062	3.625	1.062	SPICER	1330/SPL25			N	SPL25-1X
3.625	1.062	3.625	1.062	SPICER	1330/SPL25			N	SPL25-2X• <i>Coated bearing caps</i>
3.625	1.062	3.625	1.062	SPICER	1330			Y	5-1203X
3.625	1.062	3.625	1.062	SPICER	1330			Y	5-213X
3.625	1.062	3.625	1.062	SPICER	1330			Y	5-273X <i>Has metal back seals</i>
3.625	1.062	3.625	1.062	SPICER	1330			N	5-790X <i>Spicer Life Series</i>
3.625	1.062	3.625	1.062	SPICER	1330			N	5-791X• <i>Coated bearing caps; Spicer Life Series</i>
3.625	1.062	3.625	1.062	SPICER	SPL25/1330			Y	5-812X <i>Spicer Life Series</i>
3.625	1.062	3.625	1.125	SPICER	1310SPEC/SPL22			N	SPL25-3X

• Part is discontinued ■ Part is available until supply is exhausted ▲ Not sold separately

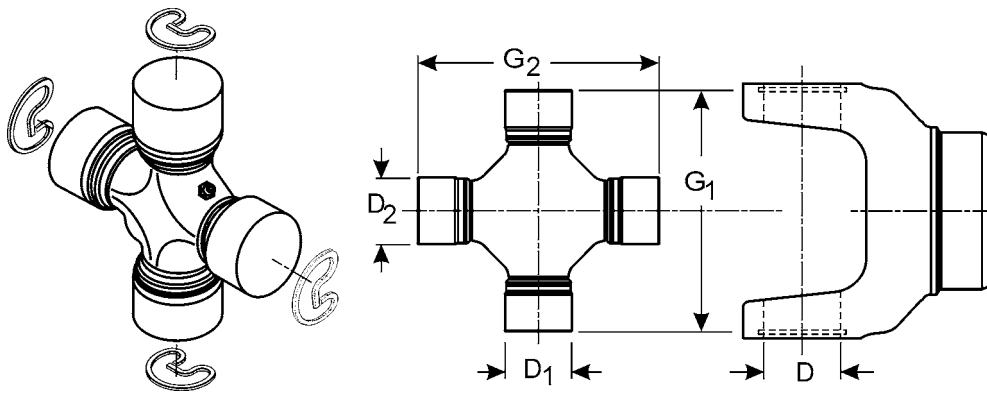
MSC



MSC

G1 Over Caps	D1 Bearing cap Diameter	G2 Over Caps	D2 Bearing cap Diameter	OE Mfg.	OE Series	Converts From this Series	To this Series Part	Greasable (Y=yes N=no)	Spicer Part Number
3.625	1.062	3.625	1.125	SPICER	1330SPEC			Y	5-1204X
3.625	1.062	3.625	1.125	SPICER	1330SPEC			N	5-792X
									<i>Spicer Life Series</i>
3.625	1.062	3.625	1.188	SPICER		1330	1350	Y	5-648X
3.625	1.188	3.625	1.188	SPICER	1350/SPL30			N	SPL30-1X
3.625	1.188	3.625	1.188	SPICER	SPL30			N	SPL30-2X•
									<i>Coated bearing caps</i>
3.625	1.188	3.625	1.188	SPICER	1350/SPL30			N	SPL30-3X▪
									<i>2-Coated bearing caps, 2-Uncoated</i>
3.625	1.188	3.625	1.188	SPICER	1350/SPL30			N	SPL30-4X•
3.625	1.188	3.625	1.188	SPICER	1350			Y	5-174X
									<i>Has metal back seals</i>
3.625	1.188	3.625	1.188	SPICER	1350WJ			N	5-282X
									<i>Has metal back seals</i>
3.625	1.188	3.625	1.188	SPICER	1350			N	5-447X
									<i>Coated bearing caps</i>
3.625	1.188	3.625	1.188	SPICER	1350			N	5-471X
									<i>Has metal back seals - spec for US govt.</i>
3.625	1.188	3.625	1.188	SPICER	1350			Y	5-480X▪
3.625	1.188	3.625	1.188	SPICER	1350			Y	5-542X
									<i>Has metal back seals</i>
3.625	1.188	3.625	1.188	SPICER	1350			Y	5-584X
									<i>Same as 5-178X except includes 45° Zerk</i>
3.625	1.188	3.625	1.188	SPICER	1350WJ			N	5-86X
									<i>Used in closed end Spicer front axle; No bearing cap seals</i>
3.625	1.188	3.625	1.888	SPICER	1350			Y	5-178X
3.625	1.188	3.625	1.888	SPICER	1350			N	5-799X
									<i>Spicer Life Series</i>
3.625	1.188	3.625	1.888	SPICER	1350			N	5-800X•
									<i>Coated bearing caps; Spicer Life Series</i>
3.767	1.126	3.767	1.126	ITALCARDANO	96-B			Y	050207000
3.900	1.005	3.900	1.005	BORG WARNER	3DR			Y	5-265X
									<i>4-round knurled caps - No hardware incl.</i>
4.188	1.188	4.188	1.188	SPICER	1410/SPL36			N	SPL36-1X
4.188	1.188	4.188	1.188	SPICER	1410/SPL36			N	SPL36-2X•
									<i>Coated bearing caps;</i>
4.188	1.188	4.188	1.188	SPICER	1410/SPL36			N	SPL36-3X•
4.188	1.188	4.188	1.188	SPICER	1410/SPL36			N	SPL36-4X•

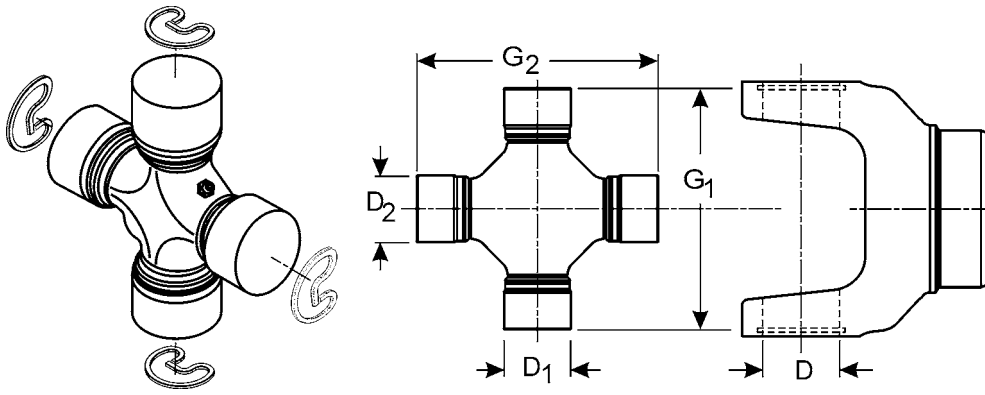
• Part is discontinued ■ Part is available until supply is exhausted ▲ Not sold separately



G1 Over Caps	D1 Bearing cap Diameter	G2 Over Caps	D2 Bearing cap Diameter	OE Mfg.	OE Series	Converts From this Series	To this Series Part	Greasable (Y=yes N=no)	Spicer Part Number
4.188	1.188	4.188	1.188	SPICER	1410			Y	5-160X
4.188	1.188	4.188	1.188	SPICER	1410			N	5-429X [▲]
									<i>Has metal back seals</i>
4.188	1.188	4.188	1.188	SPICER	1410			Y	5-462X
4.188	1.188	4.188	1.188	SPICER	1410			Y	5-481X
4.188	1.188	4.188	1.188	SPICER	1410			N	5-641X
									<i>5-641X was replaced by 5-801X</i>
4.188	1.188	4.188	1.188	SPICER	1410			N	5-801X
									<i>Spicer Life Series</i>
4.188	1.375	4.188	1.375	SPICER	1480/SPL55			Y	SPL55-1X
4.188	1.375	4.188	1.375	SPICER	1480/SPL55			N	SPL55-2X [•]
4.188	1.375	4.188	1.375	SPICER	1480/SPL55			N	SPL55X
4.188	1.375	4.188	1.375	WALTERSCHEID	2200			Y	044439 [•]
4.188	1.375	4.188	1.375	SPICER	1480			Y	5-188X
4.188	1.375	4.188	1.375	SPICER	1480			Y	5-263X
4.188	1.375	4.188	1.375	SPICER	1480			N	5-319X
									<i>Has metal back seals</i>
4.188	1.375	4.188	1.375	SPICER	1480			Y	5-482X
4.188	1.375	4.188	1.375	SPICER	1480			N	5-803X
									<i>Spicer Life Series</i>
4.188	1.375	4.188	1.375	SPICER	SPL55/1480			Y	5-804X
									<i>Spicer Life Series</i>
4.312	1.531	4.312	1.531	ROCKWELL	55N			Y	5-432X
4.957	1.625	4.957	1.625	SPICER	SPL100			Y	SPL100-1X
									<i>Dimensionally same as SPL90X</i>
4.957	1.625	4.957	1.625	SPICER	SPL90			Y	SPL90X
4.964	1.375	4.964	1.375	SPICER	1550/SPL70			Y	SPL70-1X
4.964	1.375	4.964	1.375	SPICER	1550/SPL70			N	SPL70X
4.964	1.375	4.964	1.375	SPICER	1550			Y	5-155X
4.964	1.375	4.964	1.375	SPICER	1550			Y	5-275X
									<i>Has metal back seals</i>
4.964	1.375	4.964	1.375	SPICER	1550			Y	5-304X
4.964	1.375	4.964	1.375	SPICER	1550			Y	5-483X
4.964	1.375	4.964	1.375	SPICER	1550			Y	5-543X
									<i>Has metal back seals</i>
4.964	1.375	4.964	1.375	SPICER	1550			Y	5-546X
									<i>2-Snap rings & 2-Thrust plates w/metric bolts</i>
4.964	1.375	4.964	1.375	SPICER	1550			Y	5-778X
									<i>Same as 5-275X but includes 45° zerk, and has metal back</i>

• Part is discontinued ■ Part is available until supply is exhausted ▲ Not sold separately

MSC

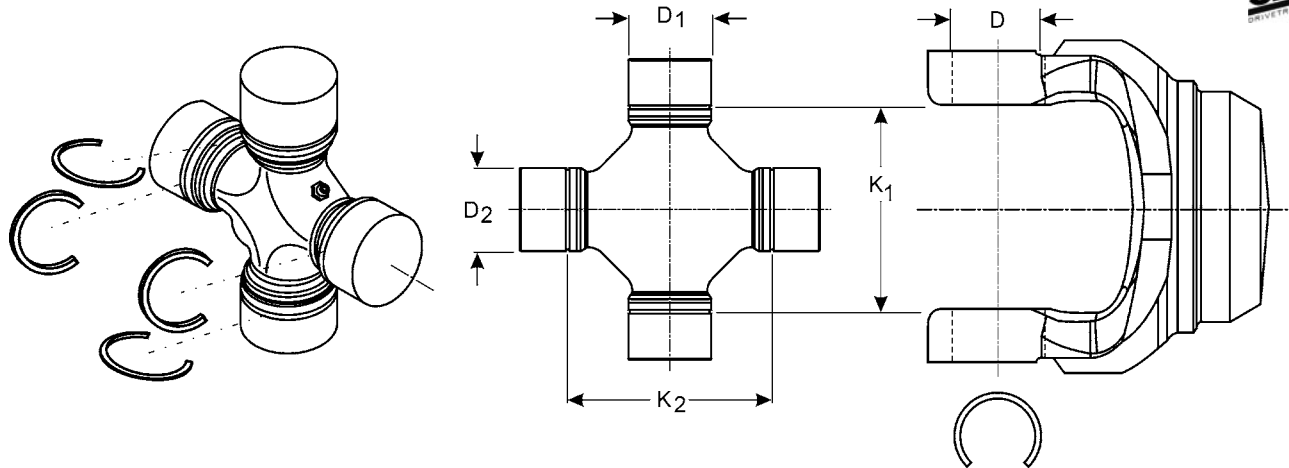


MSC

G1 Over Caps	D1 Bearing cap Diameter	G2 Over Caps	D2 Bearing cap Diameter	OE Mfg.	OE Series	Converts From this Series	To this Series Part	Greasable (Y=yes N=no)	Spicer Part Number
4.964	1.375	4.964	1.375	SPICER	1550			N	5-808X <i>Spicer Life Series</i>
5.590	1.163	5.590	1.163	SPICER	1650			Y	5-165X
6.011	1.980	6.011	1.980	SPICER ITALCARDANO				Y	050967100
8.092	2.186	8.092	2.186	SPICER	1850			Y	5-185X

Has three hole plates instead of snap rings

• Part is discontinued ■ Part is available until supply is exhausted ▲ Not sold separately



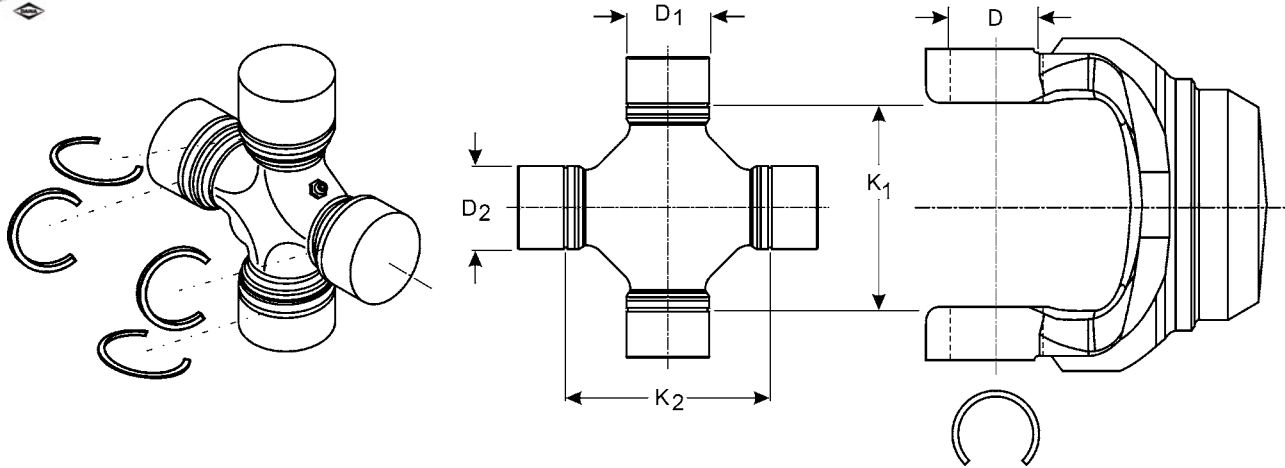
K1 Between Snap Rings	D1 Bearing cap Diameter	K2 Between Snap Rings	D2 Bearing cap Diameter	OE Mfg.	OE Series	Converts From this Series	To this Series Part	Greasable (Y=yes N=no)	Spicer Part Number
1.445	.971	1.445	.971	ROCKWELL	L6N			Y	5-92X
1.482	.886	1.482	.886	MAZDA				N	5-1514X
1.496	.787	1.496	.787	DAT-TOY				N	5-1500X
1.500	.938	1.445	.971	ROCKWELL	L6N	1000	L6N	Y	5-430X
1.500	.938	1.500	.938	SPICER	1000			N	5-110X
1.500	.938	1.500	.938	SPICER	1000SG			Y	5-755X•
								<i>Used in aluminum steering shafts</i>	
1.500	.938	1.500	.938	SPICER	1000SG			Y	5-103X
1.500	.938	1.500	.938	SPICER	1000			Y	5-170-1X
								<i>Lube fitting in brg. cap</i>	
1.500	.938	1.500	.938	SPICER	1000			Y	5-170X
1.640	1.062	1.640	1.062	SPICER	1210WJ			N	5-456X
1.718	1.000	1.718	1.000	SPICER	1100			Y	5-105X
1.723	.984	1.723	.984	MAZDA				N	5-1504X•
1.734	.984	1.734	.984	DATSUN				N	5-1501X
1.828	1.062	1.828	1.062	ROCKWELL	L12N	1140	L12N	Y	5-242X
2.047	1.142	2.047	1.142	TOYOTA				N	5-1510X
2.080	1.142	2.080	1.142	CHEV LUV				Y	5-1515X
2.125	1.078	2.125	1.078	DETROIT	7260			Y	5-1306-1X
								<i>Lube fitting in brg. cap</i>	
2.125	1.078	2.125	1.078	DETROIT	7260			N	5-789X
								<i>Spicer Life Series</i>	
2.125	1.078	2.125	1.078	DETROIT	7260			Y	5-1306X
2.125	1.078	2.125	1.078	MERCUISER	7260			Y	5-589X
								<i>Mercruiser kit</i>	
2.125	1.078	2.625	1.125	DETROIT	7260	7260	7290	Y	5-527X•
2.188	1.062	2.188	1.062	SPICER	1310WJ			N	5-74X
								<i>Used in closed end Spicer front axle; No bearing cap seals</i>	
2.188	1.062	2.188	1.062	SPICER	1310WJ			Y	5-260-1X
								<i>Lube fitting in brg. cap</i>	
2.188	1.062	2.188	1.062	SPICER	1310WJ			N	5-260X
2.188	1.188	2.188	1.188	SPICER	1310WJ			N	5-297X
								<i>5-297X was replaced by 5-760X</i>	
2.188	1.188	2.188	1.188	SPICER	1310WJ			N	5-760X
2.188	1.188	2.188	1.188	SPICER	1310WJ			Y	5-297-1X
								<i>Lube fitting in brg. cap</i>	
2.200	1.025	2.200	1.025	TOYOTA				Y	5-1508X
2.208	1.102	2.208	1.102	DATSUN				Y	5-1505X
2.343	1.062	2.343	1.062	SPICER	1310			Y	5-350X

• Part is discontinued ■ Part is available until supply is exhausted ▲ Not sold separately

MSC

Inside Snap Ring (ISR) Style

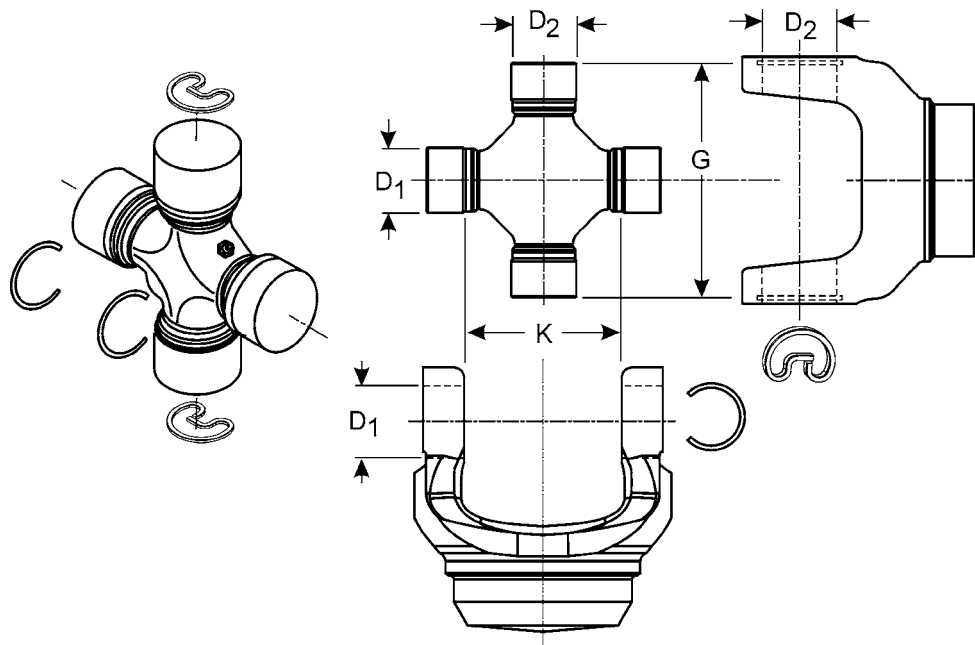
K350



MSC

K1 Between Snap Rings	D1 Bearing cap Diameter	K2 Between Snap Rings	D2 Bearing cap Diameter	OE Mfg.	OE Series	Converts From this Series	To this Series Part	Greasable (Y=yes N=no)	Spicer Part Number
2.344	1.000	2.344	1.000	MECHANICS	2R			Y	5-2011X
2.375	1.062	2.375	1.062	CLEVELAND	S55			Y	5-718X
									<i>Coated bearing caps</i>
2.375	1.062	2.375	1.062	CLEVELAND	S55			Y	5-1200X
2.453	1.497	2.453	1.497	MERCEDES				Y	5-1506X•
2.520	1.260	2.520	1.260	TOYOTA				Y	5-1511X•
2.556	1.125	2.556	1.125	MECHANICS	S44			N	SPL25-6X
2.556	1.125	2.556	1.125	MECHANICS	S44			Y	5-3147X
2.556	1.125	2.556	1.125	SPICER	SPL25/S44			N	5-795X
									<i>Spicer Life Series</i>
2.563	1.188	2.563	1.188	CLEVELAND	R55			Y	5-1205X
2.625	1.125	2.556	1.125	DETROIT/SAGINAW	7290/S44	7290	S44	N	5-3163X•
2.625	1.125	2.625	1.125	DETROIT	7290			Y	5-1309X
2.625	1.125	2.625	1.125	DETROIT	7290			N	SPL25-9X•
2.625	1.125	2.625	1.125	DETROIT	7290			N	5-811X
									<i>Spicer Life Series</i>
2.781	1.312	2.781	1.312	ROCKWELL	44R			Y	5-431X
2.920	1.375	2.920	1.375	AAM	1485WJ			N	5006813
									<i>Spicer Life Series</i>
3.000	1.231	3.000	1.231	DETROIT	5380			Y	5-1301X
3.000	1.375	3.000	1.375	SPICER	SPL55/1480WJ			Y	5-807X
									<i>Wheel Joint, Same as SPL55-4X</i>
3.000	1.375	3.000	1.375	SPICER	SPL55/1480WJ			N	5-806X
									<i>Wheel Joint, Same as SPL55-3X</i>
3.000	1.375	3.000	1.375	SPICER	1480WJ			N	5-332X
									<i>Can use 5-806X</i>
3.000	1.375	3.000	1.375	SPICER	1480WJ			N	5-88X
									<i>Used in closed end Spicer front axle; No bearing cap seals</i>
3.000	1.375	3.000	1.375	SPICER	SPL55/1480WJ			Y	SPL55-4X
									<i>Wheel Joint, Same as 5-807X</i>
3.000	1.375	3.000	1.375	SPICER	SPL55/1480WJ			N	SPL55-3X
									<i>Wheel Joint, Same as 5-806X</i>
3.125	1.188	3.125	1.188	CLEVELAND	O55			Y	5-1206X
3.125	1.188	3.125	1.188	SPICER	SPL36			N	5004989
									<i>Spicer Life Series</i>
3.250	1.125	3.250	1.125	MECHANICS	4R			Y	5-4015X
3.780	1.375	3.780	1.375	SPICER	SPL70WJ			Y	SPL70-4X
3.780	1.375	3.780	1.375	SPICER	SPL70WJ			N	SPL70-3X

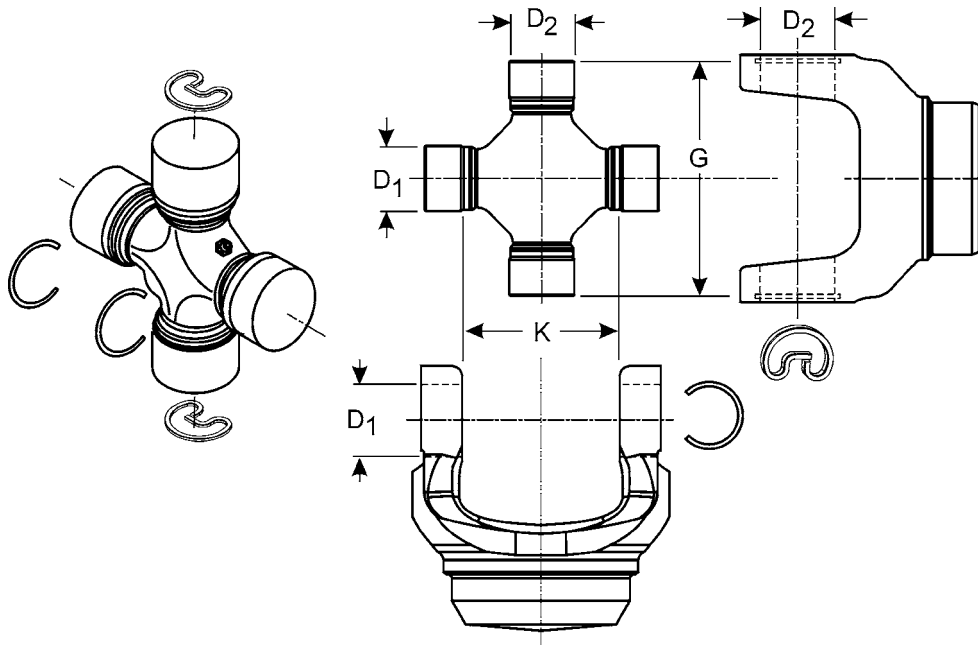
• Part is discontinued ■ Part is available until supply is exhausted ▲ Not sold separately



K	D1	G	D2	OE Mfg.	OE Series	Converts From this Series	To this Series Part	Greasable (Y=yes N=no)	Spicer Part Number
Inside Snap Ring Dimension	Inside Bearing cap Diameter	Outside Snap Ring Dimension	Outside Bearing cap Diameter						
1.719	1.000	2.438	1.062	SPICER	1110/1210	1110	1210	Y	5-248X <i>Grease zerk in center of cross</i>
1.719	1.000	2.438	1.062	SPICER	1110 SPEC	1110	1210	Y	5-249X <i>5-249X was replaced by 5-248X</i>
2.049	1.142	3.219	1.062	TOYOTA		TOYOTA	1310		5-721X•
2.125	1.078	3.219	1.062	DETROIT	7260	7260	1310	Y	5-353X
2.125	1.078	3.219	1.062	DETROIT	7260	7260	1310	N	5-634X <i>5-634X was replaced by 5-788X</i>
2.125	1.078	3.219	1.062	DETROIT	7260	7260	1310	N	5-647X <i>Coated bearing caps</i>
2.125	1.078	3.219	1.062	DETROIT	7260	7260	1310	N	5-788X <i>Spicer Life Series</i>
2.125	1.078	3.220	1.062	DETROIT	7260	7260	1310/SPL22	N	SPL22-4X
2.125	1.078	3.625	1.062	DETROIT	7260	7260	1330	Y	5-599X•
2.125	1.125	3.219	1.062	MECHANICS		2.5R	1310		5-2530X <i>Plug in center of cross lube fitting not included</i>
2.344	1.000	3.219	1.062	SPICER		2R	1310	Y	5-2140X
2.344	1.000	3.219	1.125	MECHANICS	2CL	2CL	1260	Y	5-2173X
2.375	1.062	3.625	1.062	CLEVELAND	S55			Y	5-1202X
2.556	1.125	3.219	1.062	SAGINAW	S44	S44	1310	Y	5-3022X
2.556	1.125	3.625	1.062	SAGINAW	S44	S44	1330/SPL25	N	SPL25-4X
2.556	1.125	3.625	1.062	SAGINAW	S44	S44	1330/SPL25	N	SPL25-5X <i>Outside snap rings are coated</i>
2.556	1.125	3.625	1.062	SAGINAW	S44	S44	1330	Y	5-212X
2.556	1.125	3.625	1.062	SPICER	1330/S44			N	5-541X <i>5-541X was replaced by 5-793X</i>
2.556	1.125	3.625	1.062	SAGINAW	S44	S44	1330	N	5-619X <i>5-619X was replaced by 5-793X</i>
2.556	1.125	3.625	1.062	SAGINAW	S44	S44	1330	N	5-621X <i>5-621X was replaced by 5-793X</i>

• Part is discontinued ■ Part is available until supply is exhausted ▲ Not sold separately

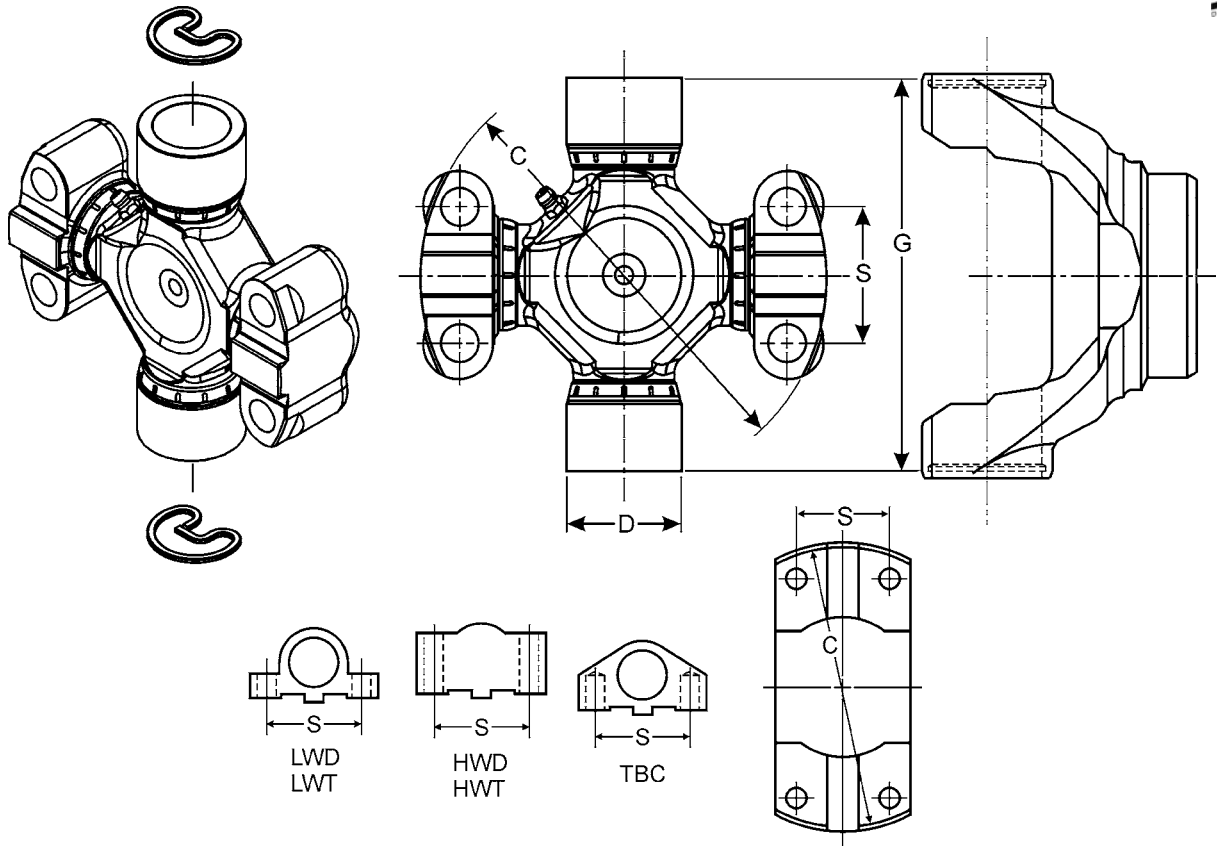
MSC



MSC

K	D1	G	D2	OE Mfg.	OE Series	Converts From this Series	To this Series Part	Greaseable (Y=yes N=no)	Spicer Part Number
Inside Snap Ring Dimension	Inside Bearing cap Diameter	Outside Snap Ring Dimension	Outside Bearing cap Diameter						
2.556	1.125	3.625	1.062	SPICER	1330/S44			N	5-793X <i>Spicer Life Series</i>
2.556	1.125	3.625	1.062	SAGINAW	S44	S44	1330	N	5-794X• <i>Outside snap rings are coated; Spicer Life Series</i>
2.556	1.125	3.625	1.062	SAGINAW	S44	S44	1330	N	5003097
2.556	1.125	3.625	1.125	CLEVELAND	P55	S44	P55	Y	5-1312X•
2.625	1.125	3.219	1.062	DETROIT		7290	1310	Y	5-354X•
2.625	1.125	3.625	1.062	DETROIT	7290	7290	1330/SPL25	N	SPL25-7X
2.625	1.125	3.625	1.062	DETROIT	7290	7290	1330/SPL25	N	SPL25-8X <i>Coated bearing caps</i>
2.625	1.125	3.625	1.062	DETROIT	7290	7290	1330	N	5-637X <i>5-637X was replaced by 5-796X</i>
2.625	1.125	3.625	1.062	DETROIT	7290	7290	1330	N	5-672X
2.625	1.125	3.625	1.062	DETROIT	7290	7290	1330	N	5-796X <i>Spicer Life Series</i>
2.767	1.062	3.625	1.125	SPICER		1330	1330SPEC	N	5-538X▪
2.767	1.125	3.625	1.188	CLEVELAND	P55	1350	P55	Y	5-1313X•
3.000	1.231	4.188	1.188	DETROIT	5380	5380	1410	Y	5-357X

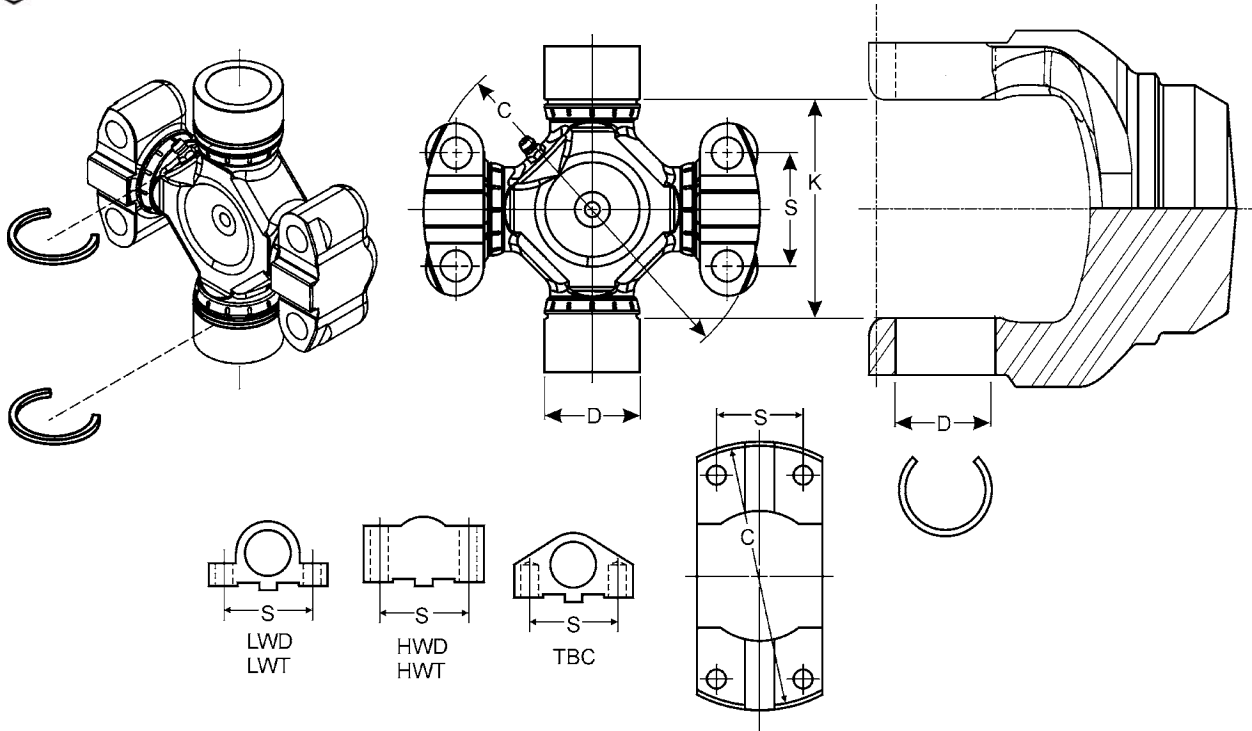
• Part is discontinued ■ Part is available until supply is exhausted ▲ Not sold separately



MSC

G Over Caps	D Bearing cap Diameter	C Pilot Diameter	S Between Bolt Holes	WB Cap Type	Converts From this Series	To this Series Part	Greasable (Y=yes N=no)	Spicer Part Number
3.219	1.062	3.125	1.312	TBC	2C	1310	Y	5-291X
3.219	1.062	3.562	1.438	TBC	3C	1310	Y	5-356X•
3.625	1.062	3.562	1.438	LWT	3C	1330/P55	Y	5-688X•
3.625	1.062	3.562	1.438	TBC	3C	1330	Y	5-314X•
3.625	1.188	3.562	1.438	LWT	3C	1350	Y	5-689X•
3.625	1.188	3.562	1.438	HWD	3C	1350	Y	5-698X•
4.188	1.188	4.250	1.438	HWD	4C	1410	Y	5-345X
4.188	1.188	4.250	1.438	LWT	4C	1410	Y	5-346X•
4.188	1.375	4.531	1.688	HWD	5C	1480	Y	5C-3X
4.188	1.375	4.531	1.688	HWT	5C	1480	Y	5C-5X
4.188	1.375	4.531	1.688	HWD	5C	1480	Y	5-347X
								5-347X was replaced by 5C-3X
4.188	1.375	4.531	1.688	HWT	5C	1480	Y	5-348X
								5-348X was replaced by 5C-5X
4.969	1.375	5.312	1.938	HWD	58WB	1550	Y	5-328X
4.969	1.375	5.312	1.938	LWT	58WB	1550	Y	5-693X•
4.969	1.375	5.312	1.938	HWT	58WB	1550	Y	5-329X•
4.969	1.375	5.531	1.688	HWD	6C/62N	1550	Y	5-221X
								5-221X was replaced by 6C-3X
4.969	1.375	5.531	1.688	HWD	6C/62N	1550	Y	6C-3X
4.969	1.375	5.531	1.688	HWT	6C/62N	1550	Y	6C-5X
4.969	1.375	5.531	1.688	HWT	6C/62N	1550	Y	5-220X
								5-220X was replaced by 6C-5X
5.594	1.625	5.844	1.938	HWT	7C/72N/68WB	1650	Y	5-331X•
5.594	1.625	5.844	1.938	HWD	7C/72N/68WB	1650	Y	5-330X
8.092	2.186	8.250	2.812	HWT	9C/92N/88WB	1850	Y	5-187X
8.092	2.186	8.250	2.812	HWD	9C/92N/88WB	1850	Y	5-186X

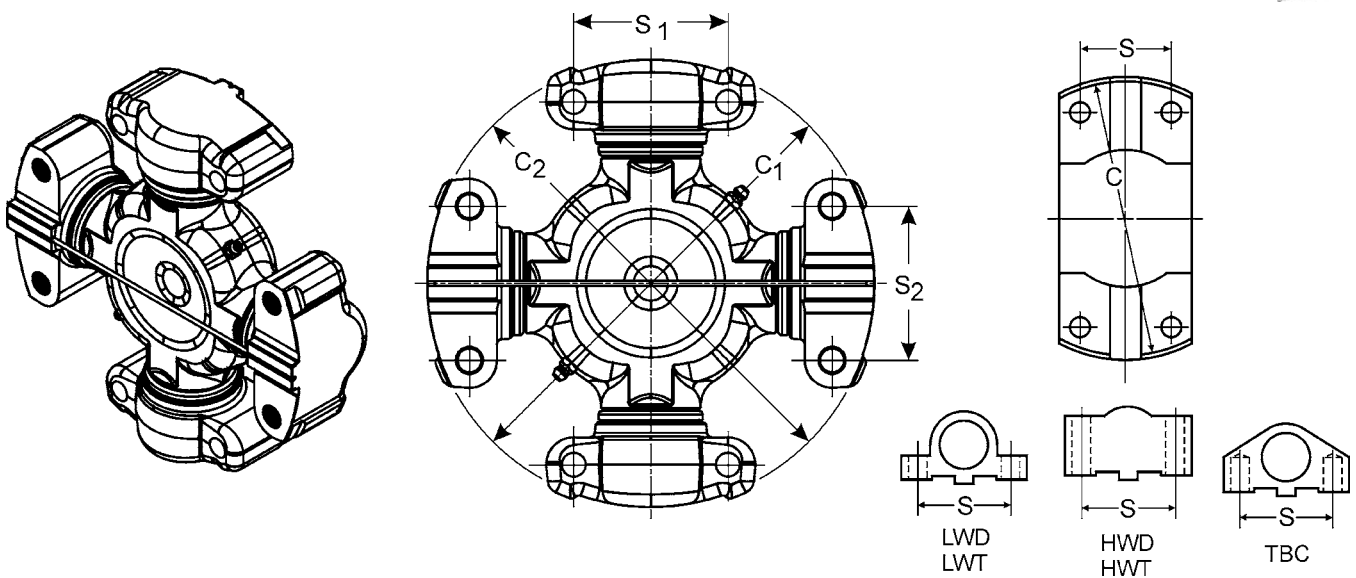
• Part is discontinued ■ Part is available until supply is exhausted ▲ Not sold separately



MSC

K	D	C	S	WB	Converts	To this	Greasable	Spicer Part
Between	Bearing cap	Pilot	Between	Cap	From this	Series	(Y=yes	Number
Snap Rings	Diameter	Diameter	Bolt Holes	Type	Series	Part	N=no)	
2.125	1.078	—	1.750	LWD	7260	SPECIAL	Y	5-1304X•
2.344	1.000	3.125	1.312	LWD	2CRL	2R	Y	5-2033X
2.344	1.000	3.125	1.312	TBC	2CRL	2R	Y	5-2031X
2.562	1.125	3.562	1.438	TBC	3CRL	S44	Y	5-3012X•
3.250	1.125	4.250	1.438	LWD	4CSRL	4R	Y	5-4016X•
3.250	1.125	4.250	1.438	LWT	4CRL	4D	Y	5-4014X
3.312	1.312	4.531	1.688	LWD	5CSRL	5R	Y	5-5015X
3.312	1.312	4.531	1.688	LWT	5CRL	5C	Y	5-5008X•

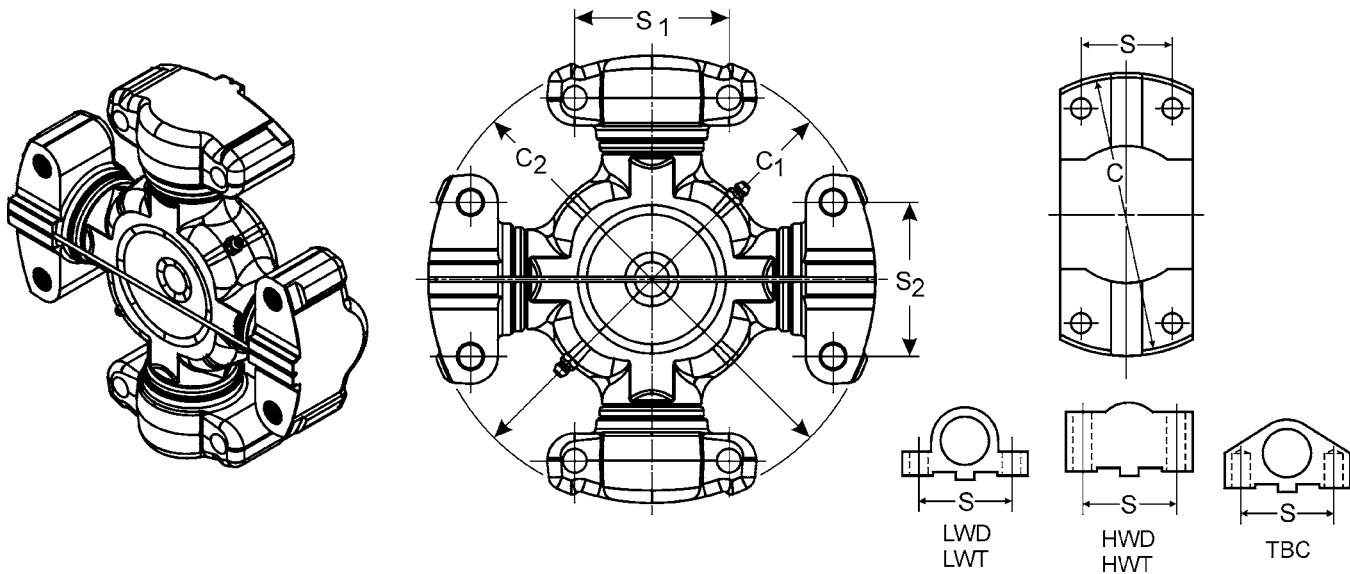
• Part is discontinued ■ Part is available until supply is exhausted ▲ Not sold separately



C1 Pilot Diameter	S1 Centerline to Centerline	WB (1) Cap Type	C2 Pilot Diameter	S2 Centerline to Centerline	WB (2) Cap Type	OE Manufacturer	Series	Greasable (Y=yes N=no)	Spicer Part Number
3.125	1.312	LWD	3.125	1.312	LWD	SPICER ITALCARDANO	2C	N	050238000
3.125	1.312	LWD	3.125	1.312	LWD	SPICER ITALCARDANO	2C	Y	050239010 <i>Grease zerk located in cap</i>
3.125	1.312	LWD	3.125	2.387	TBC	MECHANICS	2C	Y	5-2116X
3.125	1.312	TBC	3.125	2.687	TBC	MECHANICS	2C	Y	5-2002X
3.125	1.312	LWD	3.125	1.312	LWD	SPICER ITALCARDANO	2C	Y	5-781X <i>Grease zerk located in cap</i>
3.125	1.312	LWD	3.125	1.312	LWD	SPICER ITALCARDANO	2C	N	050239000
3.562	1.438	TBC	3.562	1.438	TBC	MECHANICS	3C	Y	5-3000X
4.250	1.438	LWT	4.250	1.438	LWT	MECHANICS	4C	Y	5-4002X
4.250	1.438	HWD	4.250	1.438	HWD	MECHANICS	4C		5-4143X
4.250	1.438	HWD	4.250	1.438	TBC	MECHANICS	4C	Y	5-4140X
4.250	1.438	HWD	4.250	1.438	HWD	SPICER ITALCARDANO	4C	N	050742020 <i>Bolt part number 815300001, not included</i>
4.250	1.438	HWD	4.250	1.438	HWD	SPICER ITALCARDANO	4C	Y	050742010 <i>Bolt part number 815300001, not included</i>
4.250	1.438	HWD	4.250	1.438	HWD	SPICER ITALCARDANO	4C	Y	050742000 <i>Bolt part number 815300001, not included</i>
4.531	1.688	LWD	4.531	1.688	LWT	MECHANICS	5C	Y	5-5121X
4.531	1.688	TBC	4.531	1.688	LWT	MECHANICS	5C	Y	5-5000X
4.531	1.688	HWD	4.531	1.688	HWD	MECHANICS	5C	N	050370000 <i>Bolt part number 815300007, not included</i>
4.531	1.688	HWD	4.531	1.688	HWD	MECHANICS	5C	Y	5-5177X <i>5-5177X was replaced by 5C-1X</i>
4.531	1.688	HWD	4.531	1.688	HWD	MECHANICS	5C	Y	5C-1X
4.531	1.688	HWD	4.531	1.688	HWD	SPICER ITALCARDANO	5C	Y	050776020 <i>Bolt part number 815300007, not included</i>
4.531	1.688	HWD	4.531	1.688	HWD	SPICER ITALCARDANO	5C	Y	050776010 <i>Bolt part number 815300007, not included</i>
5.312	1.938	HWD	5.312	1.938	HWD	ROCKWELL	58WB	Y	5-5800X
5.531	1.688	LWT	5.531	1.688	LWD	MECHANICS/ROCKWELL	6C/62N	Y	5-6000X
5.531	1.688	HWD	5.531	1.688	HWD	MECHANICS/ROCKWELL	6C/62N	Y	5-6106X <i>5-6106X was replaced by 050138000</i>

• Part is discontinued ■ Part is available until supply is exhausted ▲ Not sold separately
 Note: Bolts are not included with Italcadano joints unless noted; Contact manufacturer

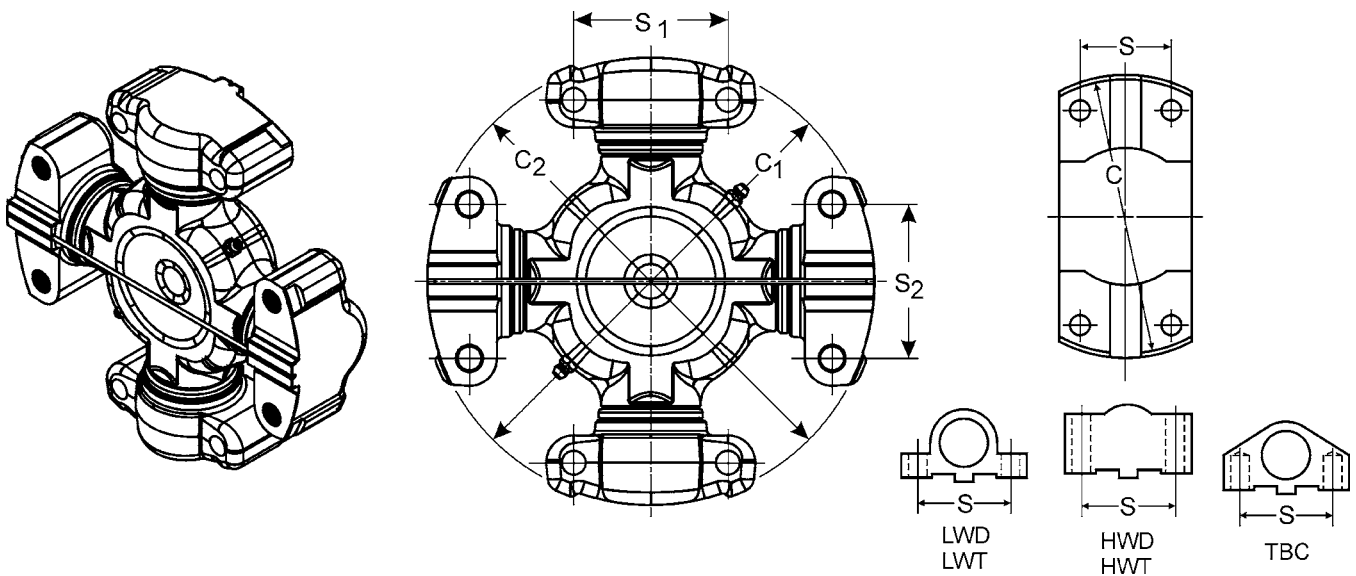
MSC



MSC

C1	S1	WB (1)	C2	S2	WB (2)	OE Manufacturer	Series	Greasable (Y=yes N=no)	Spicer Part Number
Pilot Diameter	Centerline to Centerline	Cap Type	Pilot Diameter	Centerline to Centerline	Cap Type				
5.531	1.688	LWT	5.531	1.688	HWD	MECHANICS/ROCKWELL	6C/62N	Y	5-6102X <i>5-6102X was replaced by 6C-9X</i>
5.531	1.688	LWT	5.531	1.688	HWD	MECHANICS/ROCKWELL	6C/62N	Y	6C-9X•
5.531	1.688	HWD	5.531	1.688	HWD	MECHANICS/ROCKWELL	6C/62N	Y	050138000 <i>Bolt part number 815300007, not included</i>
5.531	1.688	HWD	5.531	1.688	HWD	SPICER ITALCARDANO	6C/62N	Y	050223000
5.531	1.688	HWD	5.531	1.688	HWD	SPICER ITALCARDANO	6C/62N	N	050273000 <i>Bolt part number 815300007, not included</i>
5.531	1.688	HWD	5.531	1.688	HWD	SPICER ITALCARDANO	6C/62N	Y	050138010 <i>Bolt part number 815300007, not included</i>
5.531	1.688	HWD	5.531	1.688	HWD	SPICER ITALCARDANO	6C/62N	Y	050380000
5.531	1.688	TBC	5.844	1.938	HWD	MECHANICS/ROCKWELL	6C/7C	Y	5-6109X•
5.531	1.688	TBC	5.844	1.938	TBC	MECHANICS/ROCKWELL	6C/7C	Y	5-6108X•
5.844	1.938	LWT	5.844	1.938	LWT	MECHANICS/ROCKWELL	7C/72N	Y	5-7000X
5.844	1.938	HWD	5.844	1.938	HWD	MECHANICS/ROCKWELL	7C/72N	Y	5-7105X
5.844	1.938	TBC	5.844	1.938	HWD	MECHANICS/ROCKWELL	7C/72N	Y	5-7202X
5.844	1.938	HWD	5.844	1.938	HWD	SPICER ITALCARDANO	7C/72N	N	050280000 <i>Bolt Part Number 815300014, not included</i>
5.844	1.938	HWD	5.844	1.938	HWD	SPICER ITALCARDANO	7C/72N	N	050915222
5.844	1.938	HWD	5.844	1.938	HWD	SPICER ITALCARDANO	7C/72N	Y	050915010 <i>Bolt part number 815300014, not included</i>
5.844	1.938	HWD	5.844	1.938	HWD	SPICER ITALCARDANO	7C/72N	Y	050915000 <i>Bolt part number 815300014, not included</i>
6.500	2.812	HWD	6.500	2.812	HWD	SPICER ITALCARDANO	8.5C	Y	050246000 <i>Dual zerk in ctr of cross; Bolt# 815300015, not incl.</i>
6.500	2.812	HWD	6.500	2.812	HWD	SPICER ITALCARDANO	8.5C	N	050281000 <i>Bolt Part Number 815300015, not included</i>
6.500	2.812	LWD	6.500	2.812	LWD	SPICER ITALCARDANO	8.5C	Y	050964000
8.125	1.938	LWT	8.125	1.938	LWT	MECHANICS/ROCKWELL	8C/82N	Y	5-8200X
8.125	1.938	HWD	8.125	1.938	HWD	SPICER ITALCARDANO	8C/82N	Y	050509000 <i>Bolt Part Number 815300014, not included</i>
8.125	1.938	HWD	8.125	1.938	HWD	MECHANICS/ROCKWELL	8C/82N	Y	5-8105X
8.125	1.938	HWD	8.125	1.938	HWD	SPICER ITALCARDANO	8C/82N	Y	050509010 <i>Bolt Part Number 815300014, not included</i>

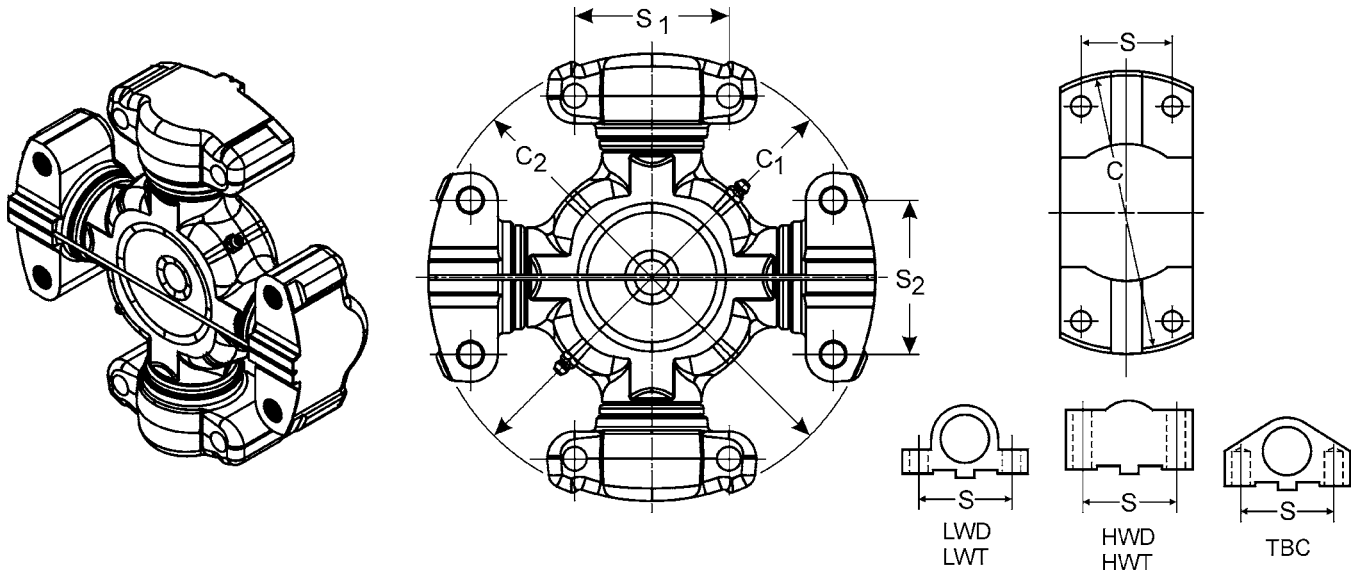
• Part is discontinued ■ Part is available until supply is exhausted ▲ Not sold separately
 Note: Bolts are not included with Italcadano joints unless noted; Contact manufacturer



C1 Pilot Diameter	S1 Centerline to Centerline	WB (1) Cap Type	C2 Pilot Diameter	S2 Centerline to Centerline	WB (2) Cap Type	OE Manufacturer	Series	Greasable (Y=yes N=no)	Spicer Part Number
8.125	1.938	HWD	8.125	1.938	HWD	SPICER ITALCARDANO	8C/82N	N	050A64000 <i>Bolt Part Number 815300014, not included</i>
8.125	1.938	TBC	8.125	1.938	HWD	MECHANICS/ROCKWELL	8C/82N	Y	5-8202X
8.250	2.812	HWT	8.250	2.812	HWD	MECHANICS/ROCKWELL	9C/92N	Y	5-9002X
8.250	2.812	HWD	8.250	2.812	HWD	MECHANICS/ROCKWELL	9C/92N	Y	5-9001X
8.250	2.812	HWD	8.250	2.812	HWD	MECHANICS/ROCKWELL	9C/92N	Y	5-643X
8.250	2.812	HWT	8.250	2.812	HWT	MECHANICS/ROCKWELL	9C/92N	Y	5-9000X
8.250	2.812	HWD	8.250	2.812	HWD	SPICER ITALCARDANO	9C/92N	N	050427000 <i>Bolt part number 815300015, not included</i>
8.250	2.812	HWD	8.250	2.812	HWD	SPICER ITALCARDANO	9C/92N	Y	050231000 <i>Two zerks in cross; Bolt part# 815300015, not incl.</i>
8.374	3.626	HWD	8.374	3.626	HWD	SPICER ITALCARDANO	10C	N	050A53000 <i>Bolt part# 815300017, not incl.</i>
8.374	3.626	HWD	8.374	3.626	HWD	SPICER ITALCARDANO	10C	Y	050A58000 <i>Two 45° zerks in cross</i>
8.374	3.626	HWD	8.374	3.626	HWD	SPICER ITALCARDANO	10C	N	050417000
8.374	3.626	HWD	8.374	3.626	HWD	SPICER ITALCARDANO	10C	Y	050242000 <i>Two zerks in cross; Bolt part# 815300017, not incl.</i>
8.750	3.500	HWD	8.750	3.500	HWD	SPICER ITALCARDANO	11C	Y	050A55000 <i>Bolt part # 815300004, not incl.</i>
8.750	3.500	HWD	8.750	3.500	HWD	SPICER ITALCARDANO	11C	N	050A56000 <i>Bolt part # 815300004, not incl.</i>
8.750	3.500	HWD	8.750	3.500	HWD	SPICER ITALCARDANO	11C	Y	050435000 <i>Has two zerks in cross</i>
8.750	3.500	HWD	8.750	3.500	HWD	TW DISC	J490	Y	5-10490X
9.685	3.228	HWD	9.685	3.228	HWD	SPICER ITALCARDANO	246-M210	Y	050781200 <i>Has two zerks in cross; includes bolts</i>
10.235	3.936	HWD	10.235	3.936	HWD	SPICER ITALCARDANO	15C	Y	050523001 <i>Has two zerks in cross</i>
11.024	3.622	HWD	11.024	3.622	HWD	SPICER ITALCARDANO	12.5C	Y	050518000 <i>Two zerks in cross; Bolt Part# 815180001, not incl.</i>
11.374	3.326	HWD	11.374	3.326	HWD	SPICER ITALCARDANO	12C	Y	050A68000 <i>Two 90° zerks in cross; bolt# 815180001, not incl.</i>

• Part is discontinued ■ Part is available until supply is exhausted ▲ Not sold separately
 Note: Bolts are not included with Italcardano joints unless noted; Contact manufacturer

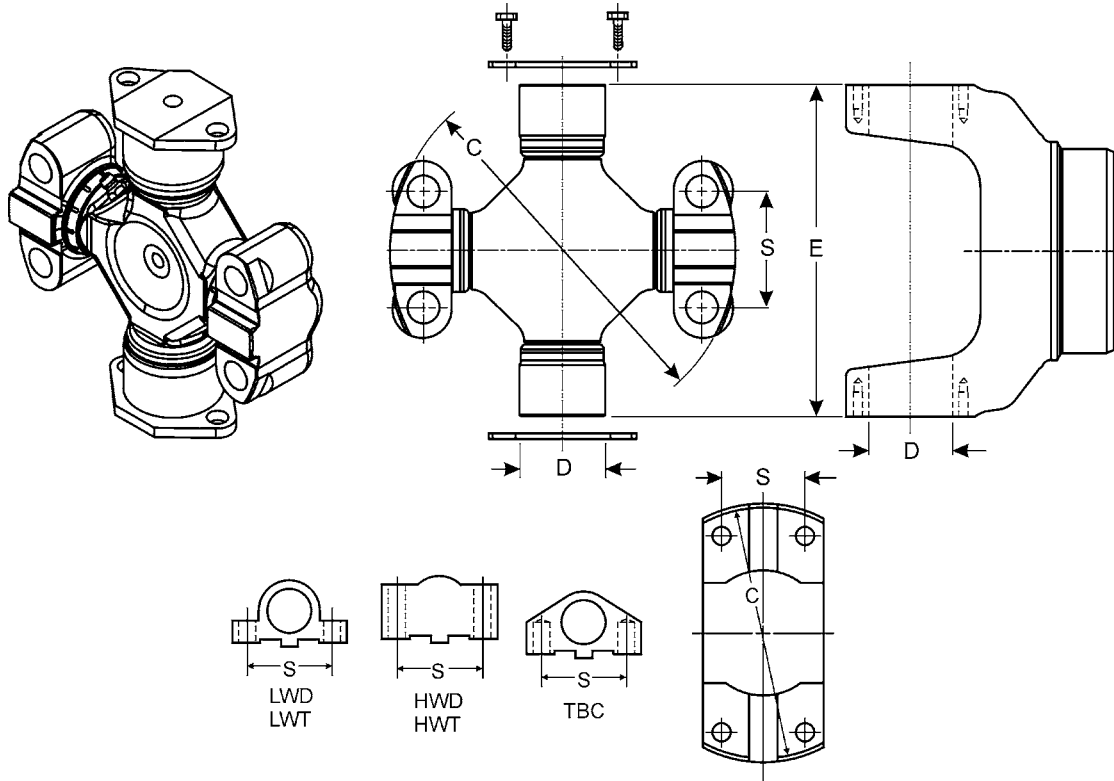
MSC



MSC

C1 Pilot Diameter	S1 Centerline to Centerline	WB (1) Cap Type	C2 Pilot Diameter	S2 Centerline to Centerline	WB (2) Cap Type	OE Manufacturer	Series	Greasable (Y=yes N=no)	Spicer Part Number
11.374	3.326	HWD	11.374	3.326	HWD	SPICER ITALCARDANO	12C	N	050111000 <i>Bolt part # 815180001, not incl.</i>
11.374	3.326	HWD	11.374	3.326	HWD	SPICER ITALCARDANO	12C	Y	050A54000 <i>Has two zerks in cross; Bolt# 815180001, not incl.</i>
12.204	4.213	HWD	12.204	4.213	HWD	SPICER ITALCARDANO	14.5C	N	050421000
13.339	5.310	HWD	13.339	5.310	HWD	SPICER ITALCARDANO	14C	N	050101000 <i>Bolt Part Number 81493001, not included</i>
13.339	5.310	HWD	13.339	5.310	HWD	SPICER ITALCARDANO	14C	Y	050A51000 <i>Dual zerk in ctr of cross; Bolt# 814930001, not incl.</i>

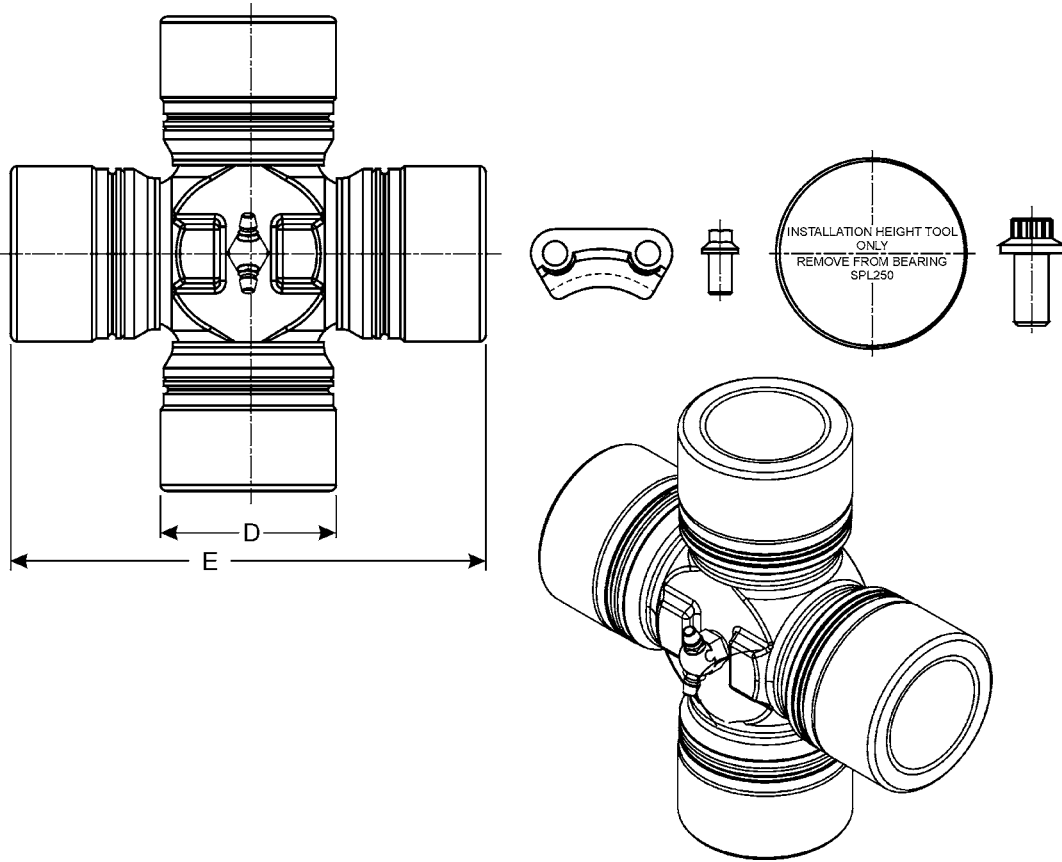
• Part is discontinued ■ Part is available until supply is exhausted ▲ Not sold separately
 Note: Bolts are not included with Italcadano joints unless noted; Contact manufacturer



MSC

E	D	C	S	WB Cap Type	Converts From this Series	To this Series Part	Greaseable (Y=yes N=no)	Spicer Part Number
Between Caps	Bearing cap Diameter	Pilot Diameter	Between Holes					
5.312	1.875	5.606	2.400	HWD	BRADLEY	1610	Y	5012401 <i>Bradley Military Vehicle (PAINTED)</i>
5.312	1.875	5.606	2.400	HWD	BRADLEY	1610	Y	5-450X <i>Bradley Military Vehicle</i>
6.094	1.938	6.375	2.438	HWD	1710	J210	Y	5-705X•
6.094	1.938	6.500	2.812	HWD	1710	8.5C/85WB	Y	5-704X•
7.547	1.938	8.250	2.812	HWD	1810	9C/92N	Y	5-324X
7.547	1.938	8.250	2.812	HWD	1810	9C/92N	Y	5-727X
<i>Two 45° grease fittings in cross</i>								
7.547	1.938	8.250	2.812	LWT	1810	9C/92N	Y	5-696X•
8.094	2.188	8.250	2.812	HWT	1880	9C/92N	Y	5-327X
8.094	2.188	8.250	2.812	HWD	1880	9C/92N	Y	5-642X
8.094	2.188	8.250	2.812	HWD	1880	9C/92N	Y	5-326X

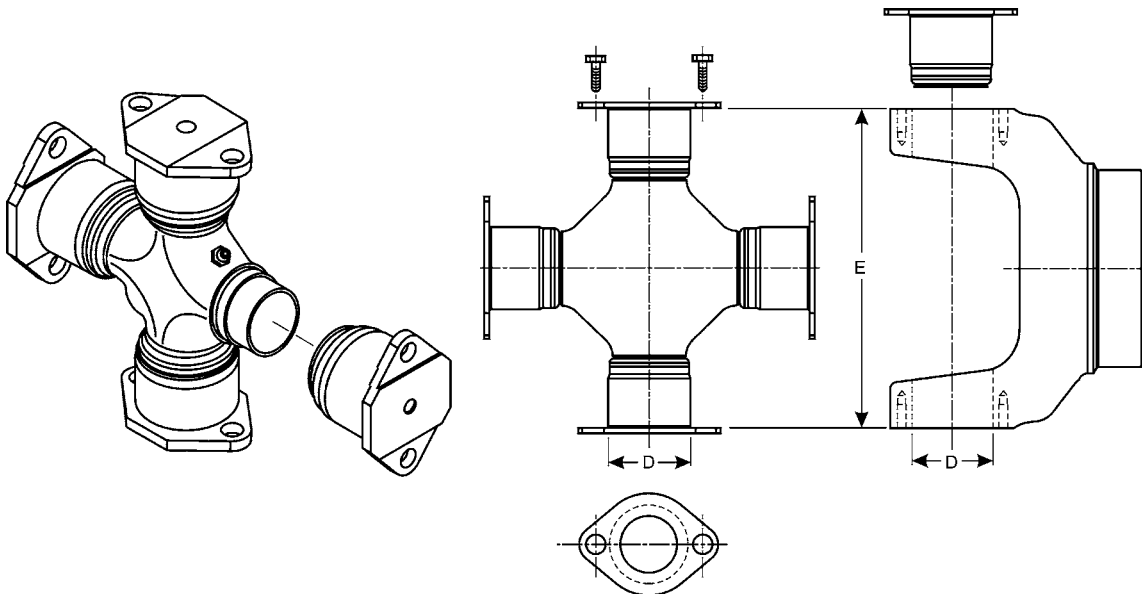
• Part is discontinued ■ Part is available until supply is exhausted ▲ Not sold separately



MSC

E Over Caps (mm)	E Over Caps (std)	D Bearing cap Diameter (mm)	D Bearing cap Diameter (std)	OE Series	Spicer OE Series	Greasable (Y=yes N=no)	Spicer Part Number
138.71	5.461	49.20	1.937	SPICER	SPL140	Y	SPL140X
164.00	6.456	55.00	2.165	SPICER	SPL170	Y	SPL170X
163.00	6.417	60.00	2.362	SPICER	SPL250	Y	SPL250X

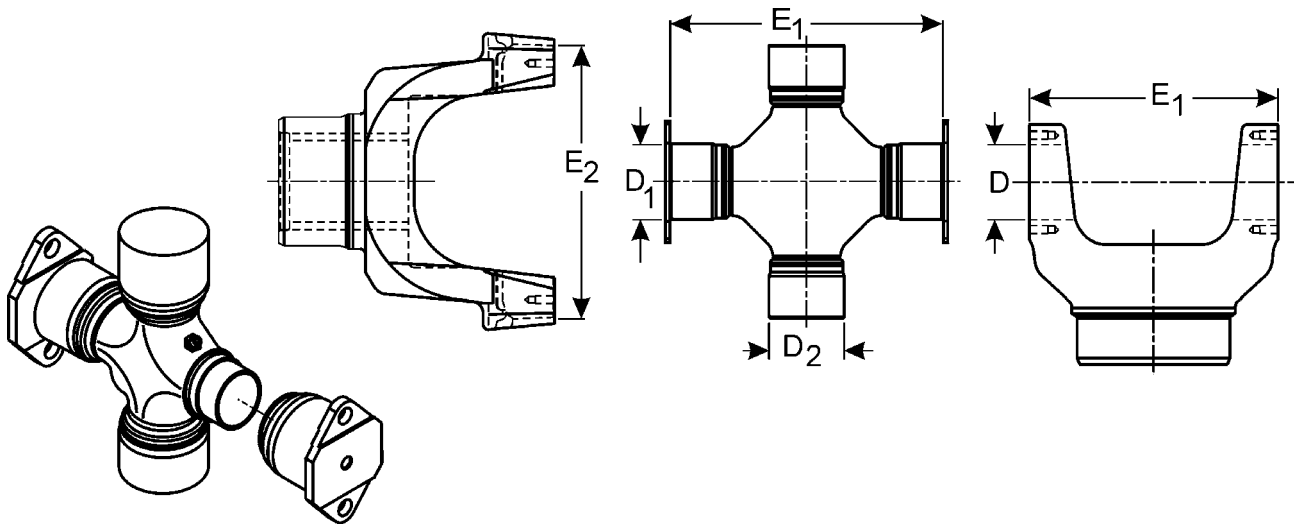
• Part is discontinued ■ Part is available until supply is exhausted ▲ Not sold separately



MSC

E Between Caps	D Bearing cap Diameter	OE Mfg.	OE Series	Greasable (Y=yes N=no)	Spicer Part Number
4.562	1.562	SPICER	1500	Y	5-115X•
5.312	1.875	SPICER	1610	Y	5-279X
6.094	1.938	SPICER	1710	Y	5-280X
6.094	1.938	SPICER	1710	Y	5-280-4X• <i>Four lube fittings in journal</i>
6.594	2.312	SPICER	1800	Y	5-124X
7.000	1.938	SPICER	1760	Y	5-407X
7.547	1.938	SPICER	1810	Y	5-281-4X• <i>Has four zerks in cross</i>
7.547	1.938	SPICER	1810	Y	5-281X
8.094	2.188	SPICER	1880		5-308X
8.781	2.812	SPICER	1900	Y	5-54X•

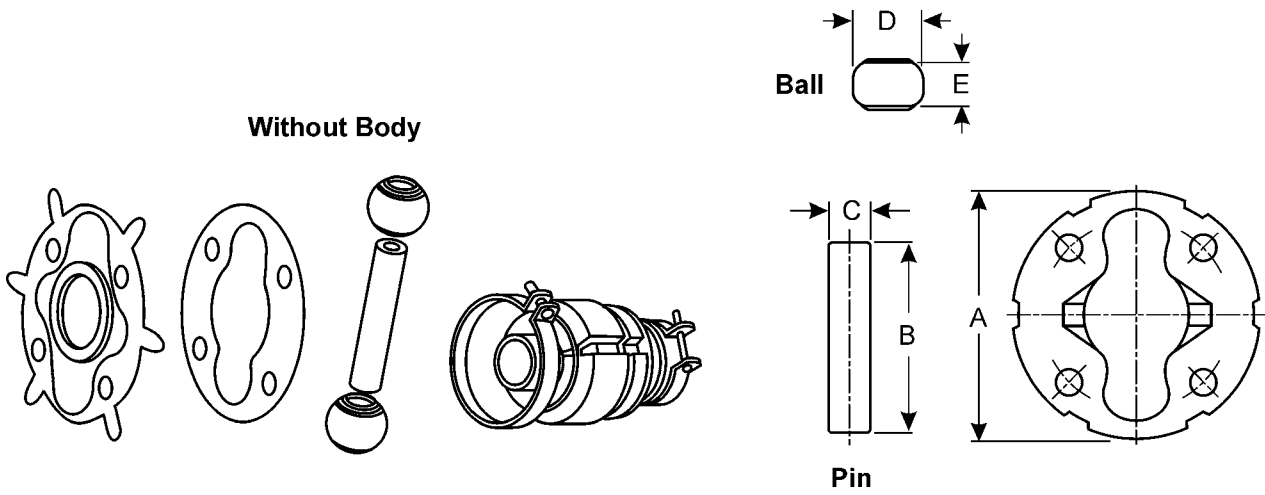
• Part is discontinued ■ Part is available until supply is exhausted ▲ Not sold separately



MSC

E1	D1	E2	D2	OE Mfg	OE Series	Greasable (Y=yes N=no)	Spicer Part Number
Between Caps	Bearing cap Diameter	Over Bearing Caps	Bearing cap Diameter				
5.312	1.875	5.312	1.875	SPICER	1610	Y	5-674X <i>Includes strap kit</i>
5.312	1.875	5.312	1.875	SPICER	1610	N	5001247 <i>Has (2) plugs in place of the zerks</i>
5.312	1.875	5.312	1.875	SPICER	1610	N	5-610X
5.312	1.875	5.312	1.875	SPICER	1610	Y	5-777X <i>Same as 5-674X w/out strap kit</i>
5.312	1.875	5.312	1.875	SPICER	1610	Y	5-585XM <i>Metric bolts w/lock strap; Grease zerk in center of cross</i>
5.312	1.875	5.312	1.875	SPICER	1610	Y	5-438X <i>5-438X was replaced by 5-674X</i>
5.312	1.875	5.312	1.875	SPICER	1610	Y	5-423X <i>Grease zerk in center of cross</i>
6.094	1.938	6.094	1.938	SPICER	1710	Y	5-746X <i>Includes metric bolts used on bearing cap</i>
6.094	1.938	6.094	1.938	SPICER	1710	Y	5-773X <i>Same as 5-675X but uses/includes strap with metric bolts</i>
6.094	1.938	6.094	1.938	SPICER	1710	Y	5-671X <i>Thrustwashers in bearing cap</i>
6.094	1.938	6.094	1.938	SPICER	1710	Y	5-675X <i>Includes strap kit</i>
6.094	1.938	6.094	1.938	SPICER	1710	Y	5-515X <i>5-515X was replaced by 5-675X</i>
7.000	1.938	7.000	1.938	SPICER	1760	Y	5-469X <i>5-469X was replaced by 5-677X</i>
7.000	1.938	7.000	1.938	SPICER	1760	Y	5-677X <i>Includes strap kit</i>
7.547	1.938	5.547	1.938	SPICER	1810	Y	5-510X <i>5-510X was replaced by 5-676X</i>
7.547	1.938	7.547	1.938	SPICER	1810	Y	5-676X <i>Includes strap kit</i>

• Part is discontinued ■ Part is available until supply is exhausted ▲ Not sold separately

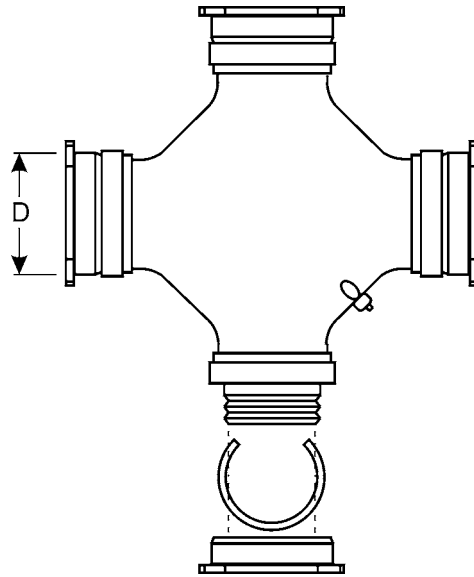


Without Body

MSC

A Flange Diameter	B Pin Length	C Pin Diameter	D Ball Diameter	E Ball Thickness	Spicer Part Number
3.625	2.969	.562	1.031	.609	5-1407X•
4.000	2.875	.562	1.031	.609	5-1405X•

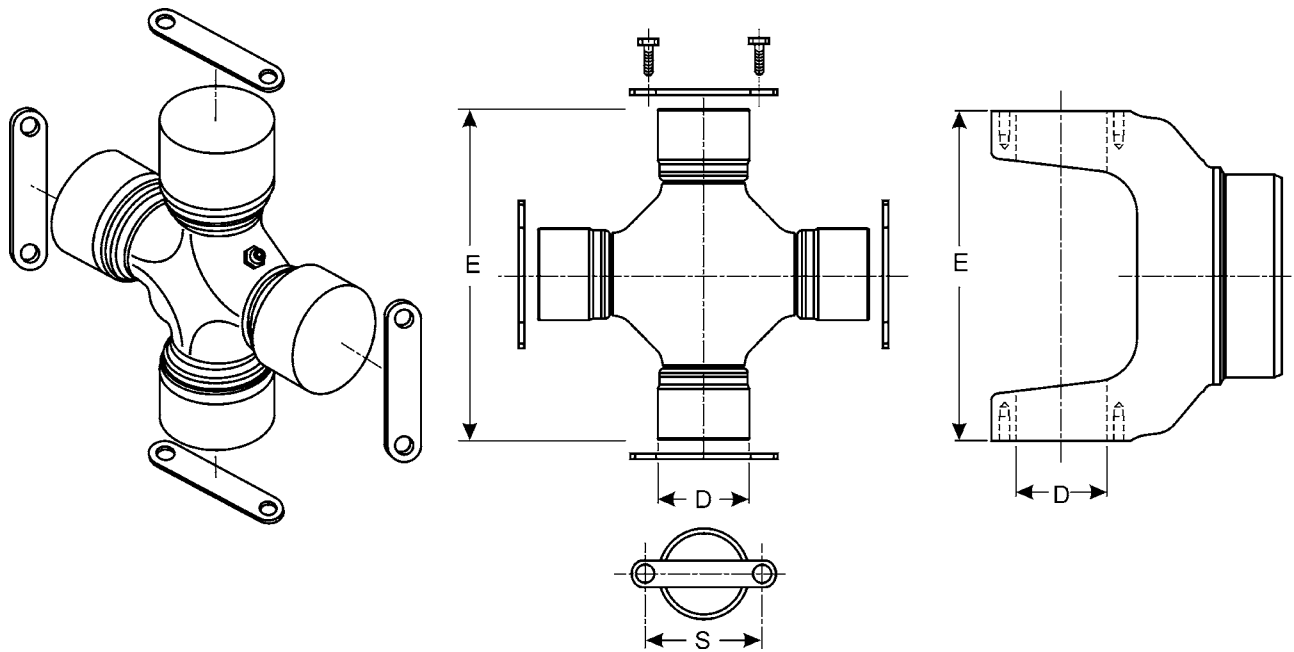
• Part is discontinued ■ Part is available until supply is exhausted ▲ Not sold separately



MSC

Over Caps	D	Thread Size	OE Series	Greasable (Y=yes N=no)	Spicer Part Number
	Bearing cap Diameter				
2.934	1.125	.938-20	CHEV	Y	5-3031X

• Part is discontinued ■ Part is available until supply is exhausted ▲ Not sold separately



E Over Caps	D1 Bearing cap Diameter	S Bolt Hole C-Line to C-Line	OE Mfg.	OE Series	Greasable (Y=yes N=no)	Spicer Part Number
4.188	1.375	1.750	CLEVELAND	D56	Y	5-1214X• <i>Bearing plates not supplied with kit</i>

MSC

• Part is discontinued ■ Part is available until supply is exhausted ▲ Not sold separately

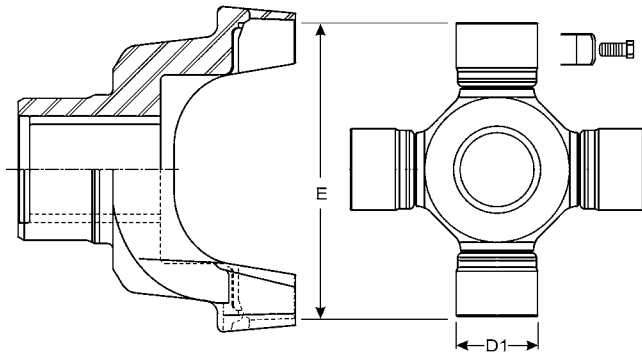


Figure 1

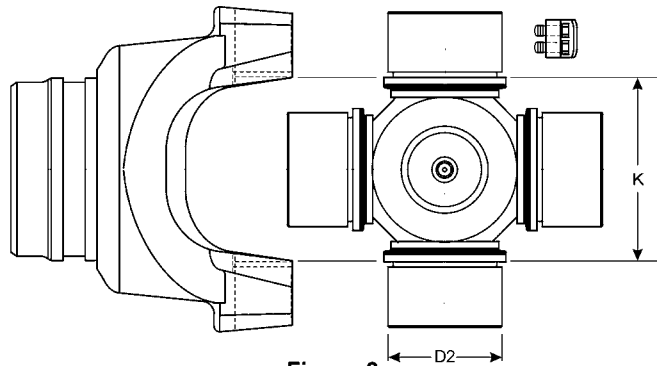


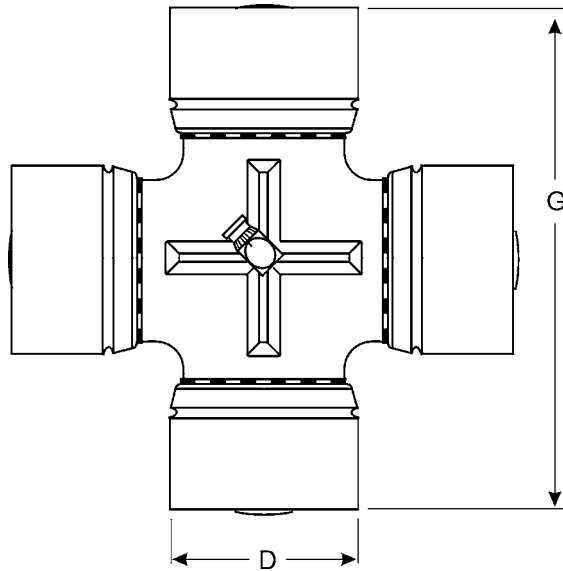
Figure 2

MSC

Figure 1		Figure 2		OE Series	Spicer OE Series	Greaseable (Y=yes N=no)	Spicer Part Number
E Over Caps	D1 Bearing cap Diameter	K Between Snap Rings	D2 Bearing cap Diameter				
—	—	5.665	2.565	SPICER	1910	Y	5-316X•
10.046	3.062	—	—	SPICER	1950	Y	5-339X•
12.343	3.812	—	—	SPICER	2050	Y	5-340X•

• Part is discontinued ■ Part is available until supply is exhausted ▲ Not sold separately

Outside Snap Ring (OSR) Style GWB Replacement Kits



MSC

G Over Caps	D Bearing cap Diameter	OE Mfg.	OE Series
1.614	.591	SPICER GWB	473.10
1.937	.748	SPICER GWB	473.20
1.976	.866	SPICER GWB	373.20
2.323	.866	SPICER GWB	473.30
2.409	.937	SPICER GWB	687.10
2.748	1.024	SPICER GWB	287.00
2.933	1.063	SPICER GWB	687.15
3.220	1.181	SPICER GWB	287.10
3.220	1.189	SPICER GWB	687.20
3.622	1.374	SPICER GWB	687.25
3.811	1.378	SPICER GWB	287.20
3.811	1.378	SPICER GWB	587.10
4.114	1.654	SPICER GWB	587.15
4.165	1.496	SPICER GWB	387.20
4.198	1.374	SPICER GWB	687.30

G Over Caps	D Bearing cap Diameter	OE Mfg.	OE Series
4.587	1.890	SPICER GWB	587.20
4.701	1.654	SPICER GWB	687.35
4.913	1.732	SPICER GWB	287.30
5.236	2.047	SPICER GWB	587.30
5.322	1.874	SPICER GWB	687.40
5.669	2.244	SPICER GWB	587.35
5.745	2.047	SPICER GWB	687.45
5.984	2.244	SPICER GWB	687.55
5.987	2.244	SPICER GWB	587.42
6.024	1.969	SPICER GWB	287.40
6.457	2.165	SPICER GWB	387.40
6.602	2.323	SPICER GWB	687.60
6.772	2.559	SPICER GWB	687.65
6.772	2.559	SPICER GWB	587.48
7.283	2.835	SPICER GWB	587.50
8.534	2.913	SPICER GWB	587.55
9.110	3.267	SPICER GWB	587.60

• Part is discontinued ■ Part is available until supply is exhausted ▲ Not sold separately

Note: For reference only; these u-joint kits are not serviced by Dana Spicer Service Parts. These service u-joint kits can be obtained by contacting Dana Driveshaft Products Group, Products of Spicer Gelenkwellenbau, Greenville, SC, (864) 987-0281.