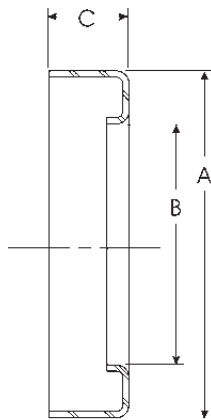
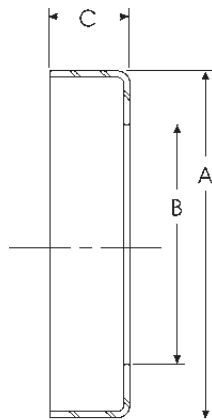


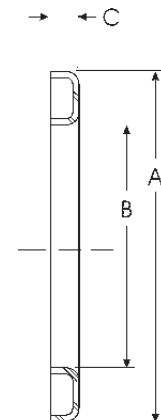
SLINGER STYLES



Style 1



Style 2



Style 3

Slinger Number	Style	A	B	C	Slinger Number	Style	A	B	C
232184 ▲	1	2.049	1.505	0.382	230998•	2	4.250	3.500	0.625
231302•	1	3.078	1.859	0.422	230859 ▲	2	4.750	2.938	0.312
232064 ▲	1	3.399	2.277	0.803	231047	2	4.891	3.500	0.750
231780 ▲	1	3.438	1.609	0.344	230902	2	5.720	4.067	0.920
231004	1	3.656	2.141	0.438	232746 ▲	2	5.940	3.697	0.710
233034 ▲	1	3.823	2.468	1.087	232002 ▲	2	6.000	3.141	0.375
230421	1	3.938	2.188	0.531	232027 ▲	2	6.000	3.141	0.359
230118	1	4.000	2.062	0.562	231866•	2	6.000	3.500	0.812
31875•	1	4.125	1.562	0.406	231745•	2	7.000	3.750	0.719
230124	1	4.134	2.308	0.560	15099•	3	2.125	1.562	0.219
231305 ▲	1	4.500	3.110	0.750	41498	3	2.125	1.603	0.219
232646 ▲	1	4.500	3.110	0.750	34592	3	2.438	1.875	0.219
230909	1	4.635	2.938	0.312	231877•	3	2.531	1.500	0.547
231541	1	4.688	2.954	0.500	330851•	3	2.844	1.562	0.406
231206	1	4.812	2.500	1.000	5003953 ▲	3	3.150	2.048	0.197
98-1361	1	4.812	2.953	0.812	5003955 ▲	3	3.150	2.168	0.197
231022	1	4.891	3.000	0.688	231620 ▲	3	3.812	3.031	0.266
231959 ▲	1	4.891	3.000	0.562	232367	3	4.000	3.000	0.812
231102	1	4.891	3.141	0.938	232039•	3	4.062	2.766	1.125
231357 ▲	1	5.000	3.109	0.750	231028	3	4.328	3.000	0.938
232189 ▲	1	5.000	3.109	0.750	565-W•	3	4.438	2.500	0.531
232638 ▲	1	5.150	3.095	1.937	232042-1 ▲	3	4.500	2.375	0.797
5003552	1	5.280	3.489	0.750	230746	3	4.625	2.391	0.875
232055	1	5.359	3.250	1.375	230910•	3	4.625	2.938	0.312
230795•	1	5.453	3.938	0.656	232372 ▲	3	4.688	3.109	1.675
231263 ▲	1	5.656	3.391	0.609	232042-2	3	4.906	2.625	0.500
231347•	1	5.672	3.031	0.469	232042-3 ▲	3	5.109	3.000	0.297
98-1362	1	5.719	2.839	0.875	232042-6 ▲	3	5.297	3.125	0.500
231179	1	5.750	3.391	0.938	232042-11•	3	5.406	3.375	0.406
231101 ▣	1	6.000	2.938	0.938	230991 ▲	3	5.438	3.938	0.656
231359	1	6.000	3.125	0.812	230888•	3	5.650	4.250	0.656
232747 ▲	1	6.050	3.488	0.690	232042-10	3	5.797	3.375	0.406
230674	1	6.125	3.516	0.750	232193 ▲	3	6.438	4.016	0.500
232759 ▲	1	6.330	4.262	1.340					
231599	1	6.750	3.391	1.500					
230921	1	7.000	3.141	0.812					
231803	1	7.000	3.484	0.891					
231615	1	7.406	3.109	0.750					

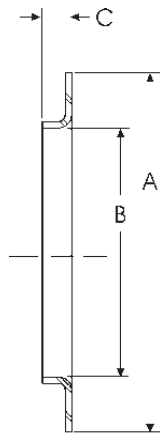
• Part is discontinued

■ Part is available until supply is exhausted

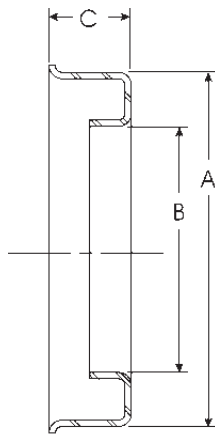
▲ Not sold separately



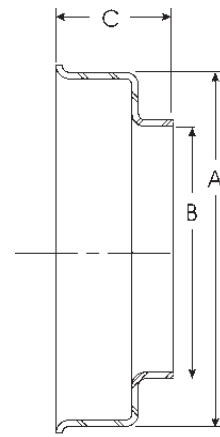
Important: See Safety Information in General Information Section (J300P-GI)



Style 4



Style 5



Style 6

Slinger Number	Style	A	B	C	Slinger Number	Style	A	B	C
42779•	4	3.125	2.188	0.340	231549•	6	2.266	1.781	0.500
232895▲	4	3.360	2.559	0.330	98-1473	6	2.266	1.781	0.500
230794	4	4.750	2.938	0.312	230881■	6	2.750	1.781	0.500
232182•	4	6.000	3.141	0.375	231636▲	6	3.000	2.281	0.578
231579▲	5	2.500	2.281	0.547	230865▲	6	3.281	2.188	0.562
231596▲	5	2.938	1.578	0.438	230629▲	6	3.375	2.031	0.719
232166	5	3.425	3.156	0.781	1015W▲	6	3.438	2.766	0.750
232168	5	3.766	3.000	0.641	230386•	6	3.562	2.375	1.250
232609•	5	3.820	3.000	1.260	230587▲	6	3.562	2.500	0.812
231750	5	3.954	3.031	0.375	231356	6	3.734	2.281	0.797
231755	5	3.954	3.062	0.562	5003086▲	6	3.965	3.094	0.709
232032▲	5	4.016	2.438	0.438	230897•	6	4.000	2.688	0.594
232514	5	4.125	2.750	0.390	232037▲	6	4.234	2.750	0.781
232610•	5	4.170	3.432	1.260	829W•	6	4.375	3.062	0.625
231616	5	4.594	3.844	0.422	330287•	6	4.562	2.766	0.891
232511	5	5.000	3.125	0.350	231366▲	6	4.672	2.844	0.891
					330287•	6	4.710	2.759	0.880
					231550▲	6	4.766	2.750	1.406
					231015	6	4.797	2.969	0.562
					330499•	6	5.000	3.062	0.812
					233038▲	6	7.368	4.795	0.658

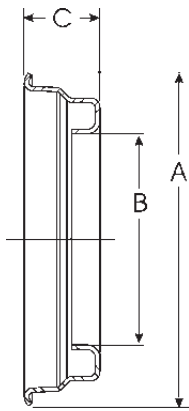
• Part is discontinued

■ Part is available until supply is exhausted

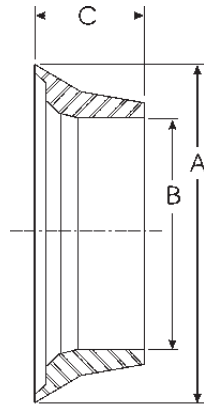
▲ Not sold separately



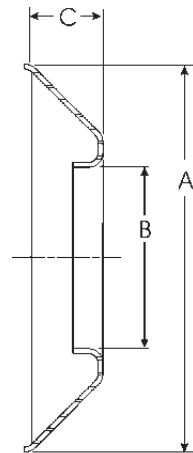
SLINGER STYLES



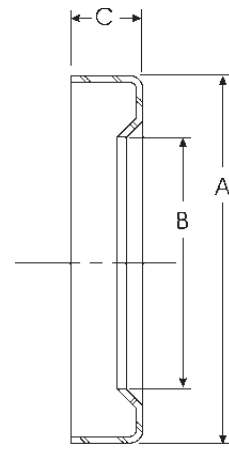
Style 9



Style 10



Style 7



Style 8

Slinger Number	Style	A	B	C
231935 ▲	7	2.875	1.188	0.375
41195 •	7	2.891	1.891	0.422
232198 ▲	7	3.312	2.469	0.562
231872	7	3.469	2.562	0.625
232199	7	3.656	3.094	0.625
232200	7	3.828	3.094	0.562
230207 ■	7	4.375	2.531	0.875
230895	7	4.625	2.391	0.875
232201	7	4.812	3.594	1.000
232948 ▲	7	5.110	3.093	0.760
230900 •	7	5.500	2.766	0.844
231058 ▲	7	6.125	4.016	0.859

Slinger Number	Style	A	B	C
232816 ▲	8	3.696	2.185	0.590
231013	8	5.125	3.438	1.125
232760 ▲	8	6.320	4.262	2.126
232167 •	9	4.344	2.750	1.000
232604	9	4.781	3.000	1.070
42735	10	2.180	1.535	0.729

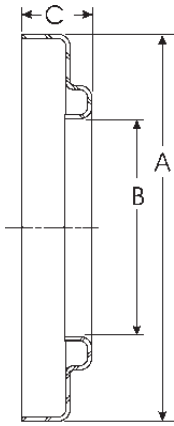
• Part is discontinued

■ Part is available until supply is exhausted

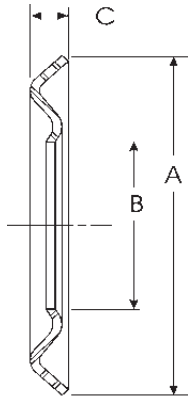
▲ Not sold separately



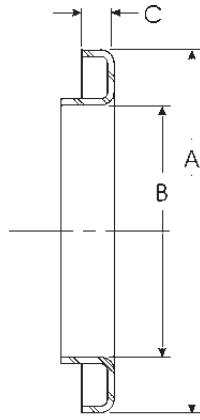
Important: See Safety Information in General Information Section (J300P-GI)



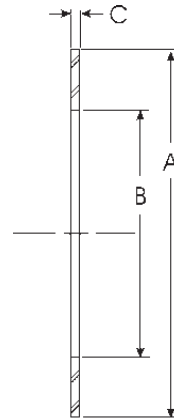
Style 11



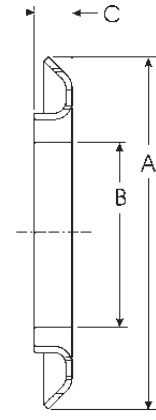
Style 12



Style 13



Style 14



Style 15

Slinger Number	Style	A	B	C
231970 [▲]	11	2.840	1.504	0.430
5003951 [▲]	11	3.654	1.735	0.622
42501	11	5.120	1.875	0.793
233051 [•]	11	5.886	3.135	0.984
5006975 [▲]	11	5.886	3.135	0.984
5008437 [•]	11	7.598	3.850	0.740

Slinger Number	Style	A	B	C
232020 [▲]	12	2.176	1.504	0.280
30798	12	3.812	1.875	0.312
5001045 [▲]	12	4.980	3.879	0.455
232028 [▲]	13	5.760	3.515	0.060
5001780 [▲]	14	6.850	4.007	0.430
5001687 [▲]	14	8.150	4.262	0.430
5002871 [▲]	15	4.710	3.133	0.984

• Part is discontinued

■ Part is available until supply is exhausted

▲ Not sold separately

