

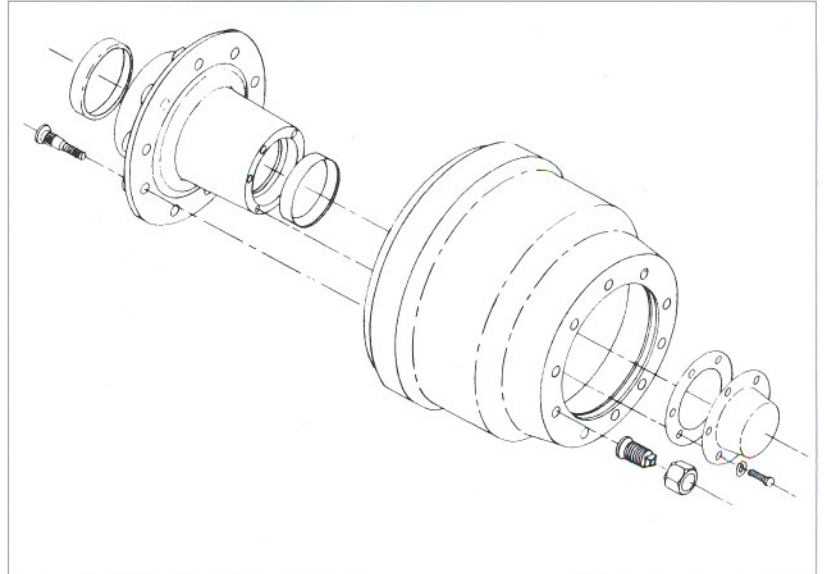
## HUB MOUNTING CONFIGURATIONS

Gunite hubs are designed for mounting "fixed rim" wheels. This kind of mounting is recognized in the industry as the simplest, strongest, and most effective. It provides for positive torque transfer through the compression of all the mating surfaces, which are held in place with studs and cap nuts.

Gunite offers a full range of hubs designed for either inboard or outboard mounted wheel-end assemblies for front, drive and trailer axles.

### Outboard Mounting

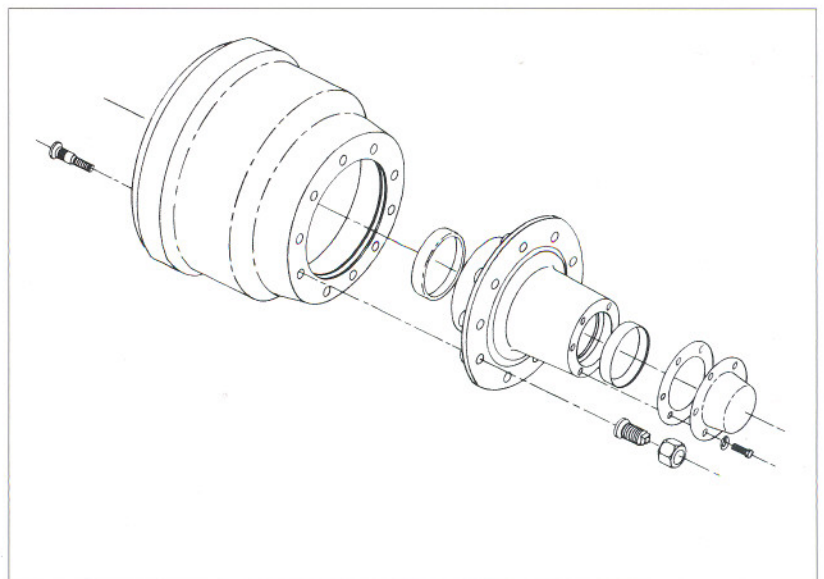
In this assembly configuration, the brake drum is mounted on the outboard face of the hub, fitting over the wheel studs. Outboard mounting allows the brakes to be serviced without the removal of the hub, bearings and oil seal, which significantly reduces downtime during regular brake inspection and service.



Outboard mounted hub and drum assembly.

### Inboard Mounting

Disc brake rotors and inboard design brake drums are mounted on the inboard side of the hub flange and held in place by the wheel studs. On double-flange hubs, which are always mounted inboard, a separate set of bolts are used.



Inboard mounted hub and drum assembly.