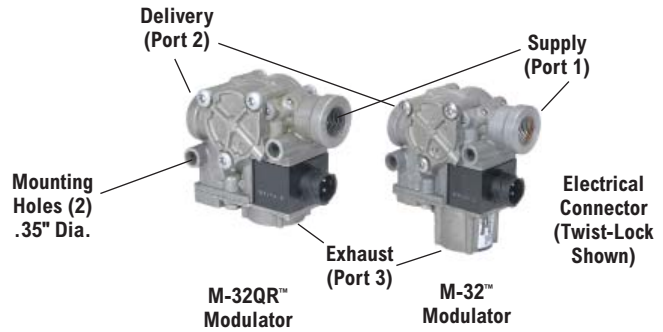


M-32™ and M-32QR™ AntiLock Modulators

V.M.R.S. 13-011-071



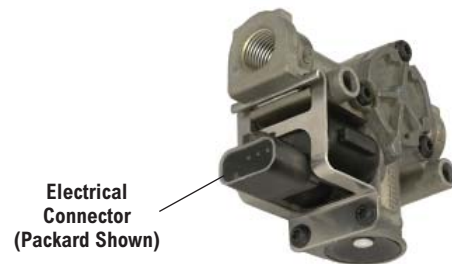
OE Pc. No.	Service New Pc. No.	Description	Exhaust Adapter	Supply Port	Delivery Port	Electrical Connector Type	Supply Voltage	Customers Include
300387	801665	M-32™ Modulator	-	1/2" NPT	1/2" NPT	Twist-Lock	12	Volvo, Mack, Peterbilt, Kenworth
5014706	801585		-	1/2" NPT	1/2" NPT	Packard		International
5016334	801456		-	5/8" PTC	1/2" STC			GM
5013223	801736		Straight snorkel	1/2" NPT	1/2" NPT	Metric thread	24	Oshkosh
5013224	801737		90° snorkel					-
5015514	802697	-	-	-	-	-	-	
5012961	801583	M-32QR™ Modulator	-	1/2" NPT	1/2" PTC	Packard	12	GM
5016344	801457		-	1/2" NPT	1/2" STC			International
5014705	801481		-	1/2" NPT	1/2" NPT			
5014704	801479		-	1/2" PTC	1/2" PTC	Twist-Lock	Bluebird	
5011281	801482		-	1/2" NPT	1/2" NPT		-	
5019258	802888		-		1/2" PTC		-	

PTC = Push-To-Connect NPT = Pipe Thread STC = Snap-to-Connect

M-30™ to M-32™ and M-32QR™ AntiLock Modulator Changeover

- M-30™ antilock modulators are no longer available. M-32™ and M-32QR™ modulators are available for service.
- When replacing the M-30™ modulators on the steer axle, replace both with M-32™ modulators.

M-30™ Pc. No.	M-32™ Service New Pc. No.	M-30™ Pc. No.	M-32™ Service New Pc. No.
5005894	801481	5009304	801481
5005895	801479	5009305	801583
5006659	801481	5009306	801583
5008951	801481	5009308	801457
5009085	801456	5009309	801457
5009086	801456		



**M-30™ Modulator
(Superseded by the
M-32™ and M-32QR™
modulators)**

Axle Modules

- Axle Module Service Assemblies are not available as a complete assembly. Service with individual components as needed.

OE Axle Module Pc. No.	Figure No.	Service Replacement Valve (Relay, Quick Release or Traction Relay)		M-32™ Modulator Service Replacement Pc. No. (Typically 2 are required) Pc. No.
		Pc. No.	Description	
5015283	1	801629	R-14® Relay Valve (4.0 psi)	801665
5017276			R-12® Relay Valve (5.5 psi)	
5011782		803115	ATR-3™ Traction Relay Valve (5.5 psi)	
5017071			ATR-3™ Traction Relay Valve (5.5 psi)	
5011740		801930	ATR-3™ Traction Relay Valve (5.5 psi)	
5020024		803115	R-12® Relay Valve (5.5 psi)	
K034765			R-12® Relay Valve (5.5 psi)	
K034767			R-12® Relay Valve (5.5 psi)	
K034768			R-12® Relay Valve (5.5 psi)	
K034778		803121	ATR-6™ Traction Relay Valve (4.0 psi)	
5020567	803170	ATR-6™ Traction Relay Valve (5.5 psi)		
5015631	Not shown	n/a	n/a	802888
5019619	2	229859N	QR-1® Quick Release Valve	802697

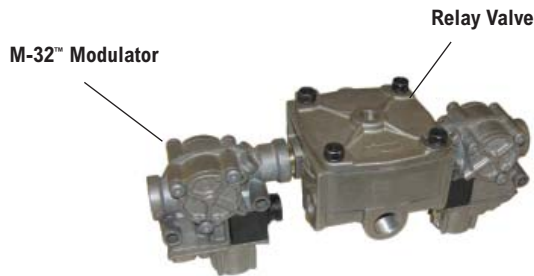


Figure 1
Axle Module
R-12° Relay Valve Version Shown
(R-14®, ATR-3™ and ATR-6™ are similar)

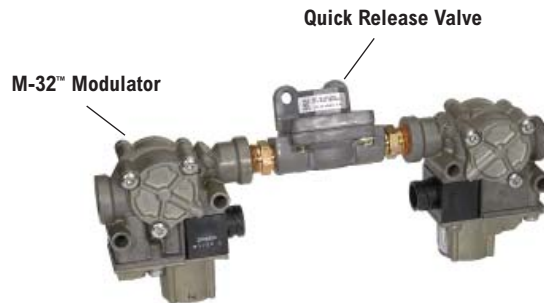
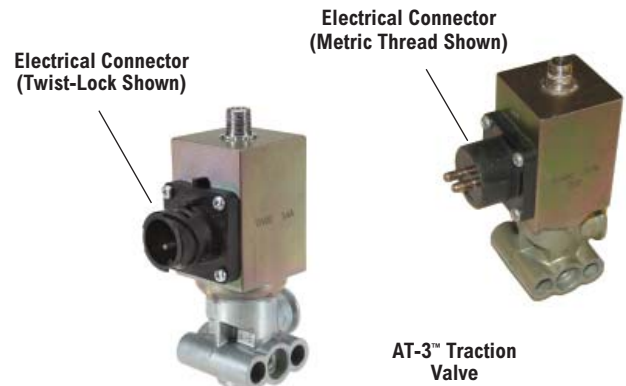


Figure 2
Axle Module
Quick Release Valve Version

AT-3™ Traction Valves

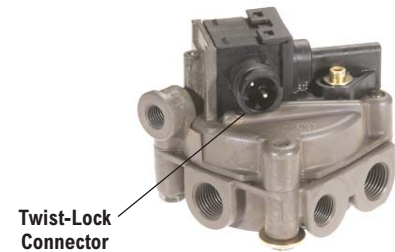
OE Pc. No.	Service Replacement Valve		Supply Voltage	Customers
	Pc. No.	Electrical Connector		
300128	801936	Metric Thread	24	Oshkosh
300354	801931	Twist-Lock	12	Mack, Volvo, Kenworth, Peterbilt
K025064				Navistar
K036918	K037085		24	—



AT-3™ Traction Valve

ATR-3™ Traction Relay Valve

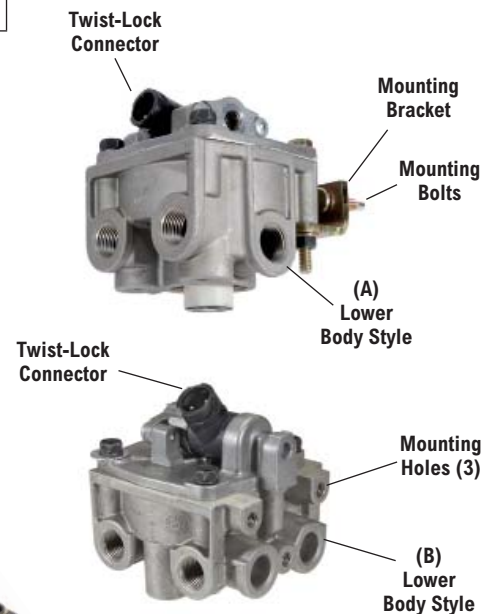
OE Pc. No.	Service New Pc. No.	Crack Pressure PSI	Supply Voltage	Mounting Bracket Included	Mounting Bracket	Customers
5014494	801932	4.0	12V	No	-	
5014497	801934			Yes	Mounting Slots – .52" long	Volvo
5018362	802749			Yes	Mounting Slots – .96" long	Volvo
300317	801930	5.5		No	-	
5014495	801933			Yes	Mounting Slots - .96" long	
5015755	802350			Yes	Mounting Bolts – 1.32" long	Kenworth
K002569	K019736	4.0	24V	No	-	



ATR-3™ Traction Relay Valve

ATR-6™ Traction Relay Valve

OE Pc. No.	Service New Pc. No.	Crack Pressure PSI	Exhaust Port	Lower Body Style	Mounting Bracket Included	Supply Voltage	Customers
5020201	803121	4.0	-	B	No	12V	Volvo
5019764	803010		-		Yes		Kenworth
K040733	K042974		1/2-14 NPT				
K041063	K041117		Silencer				
K025600	K035622	-	A				
K035538							
5020205	803119	5.5	-	B	No		
K033317	803009	5.5	-	B	Yes		Kenworth
K033319							



ATR-6™ Traction Relay Valve



Exhaust Silencer

ATR-1™ to ATR-6™ Traction Relay Valve Changeover

• ATR-1™ traction relay valves are no longer available. ATR-6™ traction relay valves and retrofit kits are available for service.

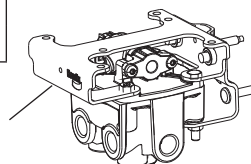
ATR-1™ Valve Pc. No.	ATR-6™ Valve Service New Pc. No.*	Crack Pressure PSI	Mounting Bracket	ATR-1™ Valve Connector Type	Harness Service Pc. No.	Supply Voltage
065516	K049444	4.0	See Bracket A	DT04-2P	K032114	12V
800030	K042710		5/16" x 1.35"			
5003921			5/16" x 1.35"	DTM06-2S-E007	K032115	
800818	K023889		5/16" x 1.35"			
5008259			801127	M8 x .95"		
5009773	K023891					



ATR-1™ Traction Relay Valve



Harness Pc. No. K032114



A Mounting Bracket



Harness Pc. No. K032115

*All the ATR-6™ traction relay valves have a twist lock connector type; the replacement part numbers include a harness adapter.

MC-30™ Trailer ABS Modules

- The MC-30™ Trailer ABS Modules are available for service.
- All service assemblies contain J1587.

OE Pc. No.	Service New Pc. No.	Description	Mounting	Default Configuration	Auto-Configurable To:	PLC
5007642	800736	MC-30™ Trailer ABS Module	Tank	4S/2M - Side	2S/2M - Axle; 2S/1M	No
5007644	800737		Tank		2S/2M - Axle; 2S/1M	Yes
5008502	800736		Tank		2S/2M - Axle; 2S/1M	No
5008264	800819		Bracket		2S/2M - Axle; 2S/1M	No
5009157	801033		Bracket		2S/2M - Axle; 2S/1M	Yes
5010565	801267	EC-30™ Trailer ABS ECU	-		2S/2M - Axle; 2S/1M	No
5010566	801268		-		2S/2M - Axle; 2S/1M	Yes



MC-30™ Trailer ABS

A-18™ Trailer ABS Modules

- The A-18™ Trailer ABS Modules are no longer available. TABS-6™ kits are available for service.

A-18™ Pc. No. (Reference Only)	Description	Bendix® TABS-6™ Replacement Kits						
		With Short - 60" Pigtail			With Long - 234" Pigtail			
		2S/1M	2S/2M - Side	4S/2M - Side	2S/1M	2S/2M - Side	4S/2M - Side	
300340	Trailer ABS ECU		-	-		-	-	
300341		K019709	K019710		K019712	K019713		
300266	Trailer ABS Module	K019708	-	-	K019711	-	-	
300267			-	-		-	-	
300268			-	-		-	-	
300269			-	-		-	-	
300358			-	-		-	-	
300359			-	-		-	-	
300360			-	-		-	-	
300213								
300362			K019709	K019710			K019712	K019713
300364								



A-18™ Trailer ABS



TABS-6™ Trailer ABS

MC-12™ Trailer ABS Modules

- The MC-12™ Trailer ABS Modules are no longer available. TABS-6™ kits are available for service.
- The MC-12™ was only available in 2S/1M configurations.

Description	Bendix® TABS-6 Replacement Kits				
	With 60" 5-pin ABS Pigtail	With 234" 5-pin ABS Pigtail	With 18" 4-pin ABS Pigtail	With 96" 4-pin ABS Pigtail	With 180" 3-pin ABS Pigtail
MC-12™ ABS Assembly for Trailers	802893	802902	802900	802898	802896
MCE-12™ ABS Assembly for Dollies	802894	802901	802899	802897	802895



MC-12™ Trailer ABS

TABS-6™ Trailer ABS Module

- All TABS-6™ Trailer ABS Modules communicate over PLC and have a 4 port relay



TABS-6™ Trailer ABS

OE Pc. No.	Service New Pc. No.	Description	Default Configuration	Auto-Configurable To:	J1587 Direct Wires Available	PLC
5014015	801855	TABS-6™ Standard	2S/1M	None	No	Yes
5014016	801856	TABS-6™ Premium	2S/1M - Dolly	2S/2M - Side; 4S/2M - Side; 4S/3M - Side/Axle	Yes	
5014112	801990	TABS-6™ Standard	2S/1M - Dolly	None	No	
5014113	801991	TABS-6™ Premium	2S/1M	2S/2M - Axle; 4S/2M - Axle	Yes	

TABS-6™ Advanced Trailer ABS with Stability Control Module

- User is required to verify proper configuration with Bendix and perform installation test using ACom® diagnostic software
- All TABS-6™ Advanced modules are 2S/1M; have a 4 port relay and may be nipple mounted to a reservoir



TABS-6™ Advanced Trailer ABS

OE Pc. No.	Service New Pc. No.	Description	Default Configuration					PLC	CAN Available
			Axle Spacing (inches)	Mounting Orientation (degrees)	Offset (inches) - side	Air Suspension Empty	Air Suspension Loaded		
K029053	K029141	TABS-6™ Advanced	49"	270°	10" curb	13 psi @ 8k	82 psi @ 34k	Yes	Yes
K041383	K041385	TABS-6™ Advanced	49"	90°	0"	14 psi @ 9k	83 psi @ 34k		
K027233	K028577	TABS-6™ Advanced	49"	270°	10" curb	11 psi @ 8k	69 psi @ 34k		

TABS-6™ Advanced Multi-Channel Trailer ABS with Stability Control Module

- User is required to verify proper configuration with Bendix and perform installation test using ACom® diagnostic software
- All TABS-6™ Advanced Multi-Channel modules have 6 delivery ports and must be frame mounted



TABS-6™ Advanced Multi-Channel Trailer ABS

OE Pc. No.	Service New Pc. No.	Description	Configuration	Default Configuration					PLC	CAN Available
				Axle Spacing (inches)	Mounting Orientation (degrees)	Offset - side (inches)	Air Suspension Empty	Air Suspension Loaded		
K026500	K028522	TABS-6™ Advanced MC	4S/2M - Side	49"	0°	0"	9 psi @ 7k	70 psi @ 34k	Yes	Yes
K028920	K028974	TABS-6™ Advanced MC	4S/2M - Side	121"	0°	0"	9 psi @ 7k	82 psi @ 40k		



Bendix® ACom® Diagnostic Software BW2329 (visit www.bendix.com)

BR9235™ ABS Modulator/Relay Valve

OE Pc. No.	Service New Pc. No.	Description	Supply	Delivery
5012023	801993	Modulator Relay Valve	3/4" NPT	4 x 3/8" NPT
5012024	801994	Modulator Relay Valve with Bracket	3/4" NPT	4 x 3/8" NPT

**BR9235™
ABS Modulator/
Relay Valve**

TABS-6™ Harnesses and Cables

OE Pc. No.	Service New Pc. No.	Description	Length
300258	802025	WS-24™ Wheel Speed Sensor Extension	80"
5015531	802052		60"
5019464	802946		260"
5015014	801996	ECU Pigtail - Standard 2S/1M	Power - 60"
5015016	801998		Power - 234"
5015018	802000	ECU Pigtail - Advanced or Premium 2S/1M	Power - 9", Diagnostic - 9"
K022146	K025647	ECU Pigtail - Advanced MC 4S/2M or 2S/2M	Power - 9"
K025593	K025621	Advanced MC - CAN diagnostic	Diagnostic - 9"
5015019	802001	ECU Pigtail - Premium 2S/1M	Power - 60", Diagnostic - 9"
5015021	802003		Power - 234", Diagnostic - 9"
5015023	802005	ECU Pigtail - Premium 2S/2M	Power - 60", Modulator - 36", Diagnostic - 9"
5015025	802007		Power - 234", Modulator - 36", Diagnostic - 9"
5015027	802009	ECU Pigtail - Premium 4S/2M	Power - 60", Modulator - 36", Sensors - 60", Diagnostic - 9"
5015029	802011		Power - 234", Modulator - 36", Sensors - 60", Diagnostic - 9"
5013352	802016	Trailer Power Harness	120" 5-pin Packard, Non-Terminated Warning Lamp - 10"
5013353	802017		780" 5-pin Packard, Non-Terminated Warning Lamp - 10"
5013343	802018	BR9235™ Remote Modulator Harness	36"
5019463	802947		280"
5007833	800790	J1587 / J1708 Remote Diagnostic Harness	120"
5009193			

TABS-6™ Service Replacement Components

Service New Pc. No.	Description
802028	TABS-6™ Standard / Premium / Advanced connector cover
K048189	TABS-6™ Advanced MC connector cover
K016644	TABS-6™ Standard connector lever
801924	TABS-6™ Standard / Premium / Advanced control line filter
K040542	TABS-6™ Advanced MC 12 pin connector plug
K048190	TABS-6™ Advanced MC silencer

WS-24™ Wheel Speed Sensors



0° (Straight)
Bendix® WS-24™ Wheel Speed Sensors

90°
Bendix® WS-24™ Wheel Speed Sensors



Clamping Sleeve
Pc. No. 801534
Included with all service new WS-24™ Sensors

New universal clamping sleeves have a Dynamark symbol stamped as shown.

NOTE: Early WS-20™ clamping sleeves have "BW" in a diamond symbol stamped and cannot be used for WS-24™ sensors.

OE Pc. No.	Service New Pc. No.	Body Style	Harness Length	Connector Type	Customers Include
300083	801544	90°	12"	DIN	Trailer OEMs.
K028296	K029519	Straight			
300084	801538	90°	75"		Peterbilt, Kenworth
300087	801542	Straight	78"		Kenworth, Mack
300150	801541	90°	63"		Volvo, Blue Bird
300151	801543	Straight	66"		Peterbilt, Kenworth, Volvo
K034750	K034753	90°	90"	Utility	
5012266	801549	90°	60"	DT04	International
5012267	801550	90°	75"		
5012268	801551	90°	40"		
5012269	801552	Straight	75"		
5012270	801553	Straight	40"		

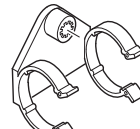
Connectors Available

<p>Delphi Metripack Series Connector CP 150.2</p>	<p>Delphi Metripack Series Connector GT 150</p>
<p>A P (280M)</p>	<p>B P (280F)</p>
<p>Delphi Metripack 280 Series Connectors</p>	
<p>Deutsch DTM06-2S Connector NOTE: Deutsch model number "DTM06-2S" molded into connector body</p>	<p>Deutsch DT04-2P Connector NOTE: Deutsch model number "DT04-2P" molded into connector body</p>
<p>Standard 2-Pin DIN Barrel Connector</p>	

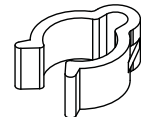
WS-20™ Wheel Speed Sensor Replacements

• WS-20™ wheel speed sensors are no longer available

WS-20™ Pc. No.	WS-24™ Service New Pc. No.	Body Style	Harness Length	Connector Type
065517	801566	90°	75"	Packard (150.2)
065518	801566			
550657	801566		60"	Deutsch DTM
5000889	801546			
5005707	801546	Straight	63"	Packard (150.2)
5006663	801567			
5006664	801567			



Retainer for a 2-Pin DIN Connector
Pc. No. 300122N



Hose Clip
Pc. No. K044394
(10 pieces)

Previous Bendix Wheel Speed Sensors
The WS-24™ sensor fit and function is compatible with all previous Bendix wheel speed sensors (when used with correct clamping sleeve - see above).